

For Research Use Only

MYH6 Polyclonal antibody

Catalog Number: 22281-1-AP

Featured Product

48 Publications



Basic Information

Catalog Number:

22281-1-AP

Size:

150ul, Concentration: 700 ug/ml by Nanodrop;

Source:

Rabbit

Isotype:

IgG

GenBank Accession Number:

NM_002471

GeneID (NCBI):

4624

UNIPROT ID:

P13533

Full Name:

myosin, heavy chain 6, cardiac muscle, alpha

Calculated MW:

224 kDa

Observed MW:

200-220 kDa

Purification Method:

Antigen affinity purification

Recommended Dilutions:

WB 1:5000-1:50000

IHC 1:20-1:200

IF-P 1:50-1:500

Applications

Tested Applications:

WB, IHC, IF-P, ELISA

Cited Applications:

WB, IHC, IF

Species Specificity:

human, mouse, rat

Cited Species:

human, mouse, rat, pig, chicken, goat

Note-IHC: suggested antigen retrieval with TE buffer pH 9.0; (*) Alternatively, antigen retrieval may be performed with citrate buffer pH 6.0

Positive Controls:

WB : mouse heart tissue, rat heart

IHC : human heart tissue, mouse heart tissue

IF-P : mouse heart tissue,

Background Information

MYH6 encodes the alpha-cardiac myosin heavy chain (aMHC) which is a major contractile protein exclusively expressed in the myocardium of the heart. Expression of MYH6 is down-regulated in cardiac myopathy and failing hearts. Defects in MYH6 lead to congenital heart disease (CHD), and a spectrum of phenotypes ranging from hypertrophic cardiomyopathy (HCM) and dilated cardiomyopathy (DCM). (15737621, 20656787)

Notable Publications

Author	Pubmed ID	Journal	Application
Hejie Wang	36178582	In Vitro Cell Dev Biol Anim	WB
Zhongyang Guo	36149397	Food Funct	WB
Silvia Mazzotta	27641648	Stem Cell Reports	IF

Storage

Storage:

Store at -20°C. Stable for one year after shipment.

Storage Buffer:

PBS with 0.02% sodium azide and 50% glycerol pH 7.3.

Aliquoting is unnecessary for -20°C storage

*** 20ul sizes contain 0.1% BSA

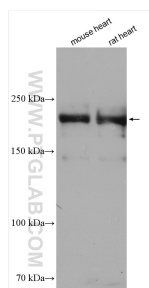
For technical support and original validation data for this product please contact:

T: 1 (888) 4PTGLAB (1-888-478-4522) (toll free in USA), or 1(312) 455-8498 (outside USA)

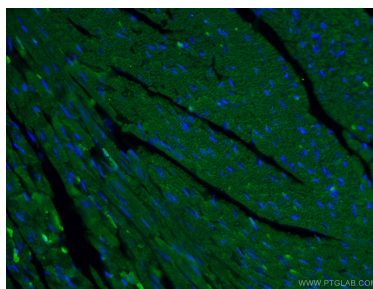
E: proteintech@ptglab.com
W: ptglab.com

This product is exclusively available under Proteintech Group brand and is not available to purchase from any other manufacturer.

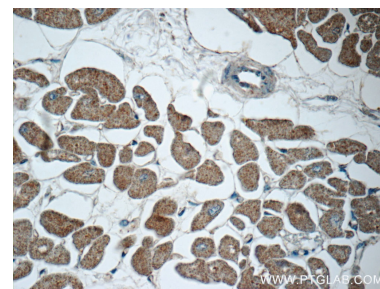
Selected Validation Data



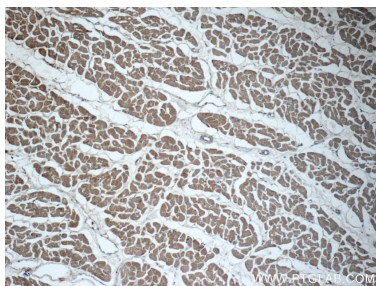
Various lysates were subjected to SDS PAGE followed by western blot with 22281-1-AP (MYH6 antibody) at dilution of 1:25000 incubated at room temperature for 1.5 hours.



Immunofluorescent analysis of (4% PFA) fixed mouse heart tissue using 22281-1-AP (MYH6 antibody) at dilution of 1:50 and Alexa Fluor 488-conjugated Goat Anti-Rabbit IgG(H+L).



Immunohistochemical analysis of paraffin-embedded human heart tissue slide using 22281-1-AP (MYH6 Antibody) at dilution of 1:50 (under 40x lens).



Immunohistochemical analysis of paraffin-embedded human heart tissue slide using 22281-1-AP (MYH6 Antibody) at dilution of 1:50 (under 10x lens).