

For Research Use Only

CLTCL1 Polyclonal antibody

Catalog Number: 22283-1-AP

Featured Product

4 Publications



Basic Information

Catalog Number:

22283-1-AP

Size:

150ul, Concentration: 450 ug/ml by Nanodrop and 300 ug/ml by Bradford method using BSA as the standard;

Source:

Rabbit

Isotype:

IgG

GenBank Accession Number:

NM_007098

GeneID (NCBI):

8218

UNIPROT ID:

P53675

Full Name:

clathrin, heavy chain-like 1

Calculated MW:

187 kDa

Observed MW:

180-210 kDa

Purification Method:

Antigen affinity purification

Recommended Dilutions:

IP 0.5-4.0 ug for 1.0-3.0 mg of total protein lysate

IHC 1:50-1:200

IF/ICC 1:50-1:500

Applications

Tested Applications:

IHC, IF/ICC, IP, ELISA

Cited Applications:

WB, IF, IP

Species Specificity:

human

Cited Species:

human

Positive Controls:

IP: HeLa cells,

IHC: human testis tissue, human heart tissue

IF/ICC: HepG2 cells,

Note-IHC: suggested antigen retrieval with TE buffer pH 9.0; (*) Alternatively, antigen retrieval may be performed with citrate buffer pH 6.0

Background Information

CLTCL1, also called CLH22, CLTCL, and CLTD, belongs to the clathrin heavy chain family. Clathrin is the major protein of the polyhedral coat of coated pits and vesicles. Two different adapter protein complexes link the clathrin lattice either to the plasma membrane or to the trans-Golgi network. The antibody is specific to CLTCL1. It has no cross-reaction to CLTC.

Notable Publications

Author	Pubmed ID	Journal	Application
Matteo Fumagalli	31159924	Elife	
Yi-Lin Wu	39633431	Proteome Sci	WB
Joshua Greig	39160272	EMBO J	WB,IF

Storage

Storage:

Store at -20°C. Stable for one year after shipment.

Storage Buffer:

PBS with 0.02% sodium azide and 50% glycerol pH 7.3.

Aliquoting is unnecessary for -20°C storage

*** 20ul sizes contain 0.1% BSA

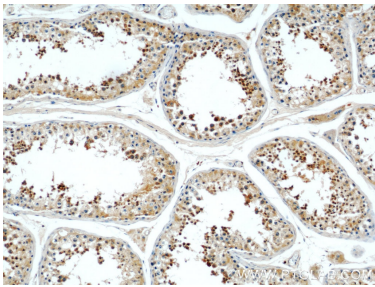
For technical support and original validation data for this product please contact:

T: 1 (888) 4PTGLAB (1-888-478-4522) (toll free in USA), or 1(312) 455-8498 (outside USA)

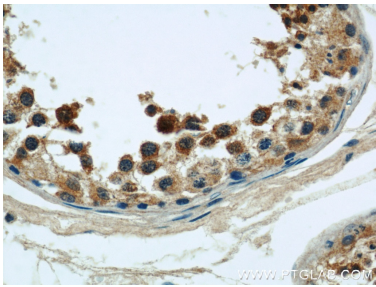
E: proteintech@ptglab.com
W: ptglab.com

This product is exclusively available under Proteintech Group brand and is not available to purchase from any other manufacturer.

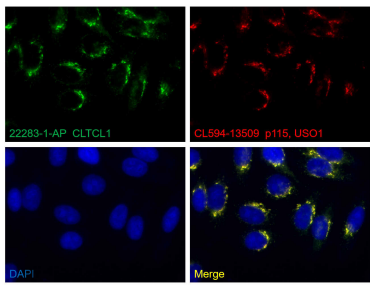
Selected Validation Data



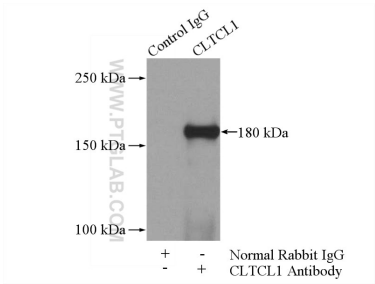
Immunohistochemical analysis of paraffin-embedded human testis using 22283-1-AP (CLTCL1 antibody) at dilution of 1:50 (under 10x lens).



Immunohistochemical analysis of paraffin-embedded human testis using 22283-1-AP (CLTCL1 antibody) at dilution of 1:50 (under 40x lens).



Immunofluorescent analysis of (-20°C Ethanol) fixed HepG2 cells using CLTCL1 antibody (22283-1-AP) at dilution of 1:100 and CoraLite®488-Conjugated Goat Anti-Rabbit IgG(H+L), CoraLite®594-conjugated p115, USO1 antibody (CL594-13509, red).



IP result of anti-CLTCL1 (IP:22283-1-AP, 4ug; Detection:22283-1-AP 1:300) with HeLa cells lysate 1200ug.