

For Research Use Only

SAR1B Polyclonal antibody

Catalog Number: 22292-1-AP

Featured Product

7 Publications



Basic Information

Catalog Number:

22292-1-AP

Size:

150ul, Concentration: 550 ug/ml by Nanodrop and 300 ug/ml by Bradford method using BSA as the standard;

Source:

Rabbit

Isotype:

IgG

GenBank Accession Number:

NM_016103

GeneID (NCBI):

51128

UNIPROT ID:

Q9Y6B6

Full Name:

SAR1 homolog B (S. cerevisiae)

Calculated MW:

22 kDa

Observed MW:

25-27 kDa

Purification Method:

Antigen affinity purification

Recommended Dilutions:

WB 1:500-1:2000

IHC 1:20-1:200

Applications

Tested Applications:

WB, IHC, ELISA

Cited Applications:

WB, IF, IP

Species Specificity:

human, mouse, rat

Cited Species:

human, mouse, rat, bovine

Note-IHC: suggested antigen retrieval with TE buffer pH 9.0; (*) Alternatively, antigen retrieval may be performed with citrate buffer pH 6.0

Positive Controls:

WB : mouse liver tissue, mouse brain tissue, mouse skeletal muscle tissue, mouse small intestine tissue

IHC : human liver tissue, human skeletal muscle tissue, human small intestine tissue

Background Information

SAR1B, also named as SARA2, SARB and GTBPB, belongs to the small GTPase superfamily and SAR1 family. It is involved in transport from the endoplasmic reticulum to the Golgi apparatus. SAR1B is activated by the guanine nucleotide exchange factor PREB. It is involved in the selection of the protein cargo and the assembly of the COPII coat complex. The antibody is specific to SAR1B.

Notable Publications

Author	Pubmed ID	Journal	Application
Mengyue You	36252341	Redox Biol	WB
Jie Chen	34290409	Nature	WB,IP
Inamul Kabir	26828064	J Biol Chem	WB

Storage

Storage:

Store at -20°C. Stable for one year after shipment.

Storage Buffer:

PBS with 0.02% sodium azide and 50% glycerol pH 7.3.

Aliquoting is unnecessary for -20°C storage

*** 20ul sizes contain 0.1% BSA

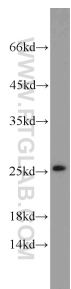
For technical support and original validation data for this product please contact:

T: 1 (888) 4PTGLAB (1-888-478-4522) (toll free in USA), or 1(312) 455-8498 (outside USA)

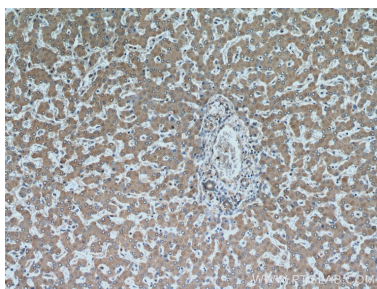
E: proteintech@ptglab.com
W: ptglab.com

This product is exclusively available under Proteintech Group brand and is not available to purchase from any other manufacturer.

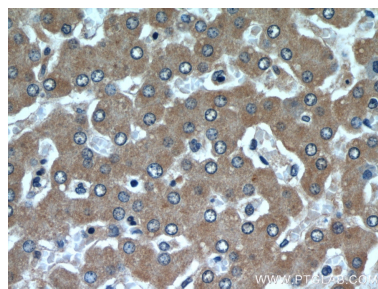
Selected Validation Data



mouse liver tissue were subjected to SDS PAGE followed by western blot with 22292-1-AP (SAR1B antibody) at dilution of 1:1000 incubated at room temperature for 1.5 hours.



Immunohistochemical analysis of paraffin-embedded human liver using 22292-1-AP (SAR1B antibody) at dilution of 1:50 (under 10x lens).



Immunohistochemical analysis of paraffin-embedded human liver using 22292-1-AP (SAR1B antibody) at dilution of 1:50 (under 40x lens).