

For Research Use Only

# CCL27 Polyclonal antibody

Catalog Number: 22301-1-AP



## Basic Information

|  |  |  |
|--|--|--|
| <b>Catalog Number:</b><br>22301-1-AP   | <b>GenBank Accession Number:</b><br>NM_006664        | <b>Purification Method:</b><br>Antigen affinity purification         |
| <b>Size:</b><br>150ul , Concentration: 300 ug/ml by Nanodrop and 260 ug/ml by Bradford method using BSA as the standard; | <b>GeneID (NCBI):</b><br>10850                       | <b>Recommended Dilutions:</b><br>IHC 1:20-1:200<br>IF/ICC 1:10-1:100 |
| <b>Source:</b><br>Rabbit   | <b>UNIPROT ID:</b><br>Q9Y4X3                         |  |
| <b>Isotype:</b><br>IgG   | <b>Full Name:</b><br>chemokine (C-C motif) ligand 27 |  |
|  | <b>Calculated MW:</b><br>13 kDa                      |  |

## Applications

|   |  |
|---|--|
| <b>Tested Applications:</b><br>IHC, IF/ICC, ELISA   | <b>Positive Controls:</b>  |
| <b>Species Specificity:</b><br>human  | <b>IHC :</b> human testis tissue, human liver tissue, human liver cancer tissue, human skin tissue, human skin cancer tissue |
| <b>Note-IHC:</b> suggested antigen retrieval with <b>TE buffer pH 9.0; (*) Alternatively, antigen retrieval may be performed with citrate buffer pH 6.0</b> | <b>IF/ICC :</b> A431 cells,  |

## Background Information

CCL27, also known as CTACK, is a member of the CC chemokine subfamily. CCL27 is predominantly expressed in skin and selectively attracts cutaneous lymphocyte antigen-positive T cells and Langerhans cells. The CCL27 secreted from keratinocytes was reportedly involved in inflammatory skin diseases such as atopic dermatitis, contact dermatitis, and psoriasis. CCL27 is a ligand to CCR10. The binding of CCL27 to CCR10 on T cells promotes their migration to the skin, where they can then participate in local immune responses.

## Storage

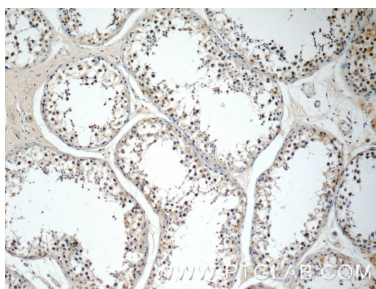
**Storage:**  
Store at -20°C. Stable for one year after shipment.  
**Storage Buffer:**  
PBS with 0.02% sodium azide and 50% glycerol pH 7.3.  
**Aliquoting is unnecessary for -20°C storage**

\*\*\* 20ul sizes contain 0.1% BSA

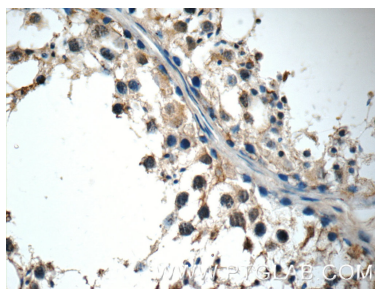
For technical support and original validation data for this product please contact:  
T: 1 (888) 4PTGLAB (1-888-478-4522) (toll free in USA), or 1(312) 455-8498 (outside USA)  
E: [proteintech@ptglab.com](mailto:proteintech@ptglab.com)  
W: [ptglab.com](http://ptglab.com)

This product is exclusively available under Proteintech Group brand and is not available to purchase from any other manufacturer.

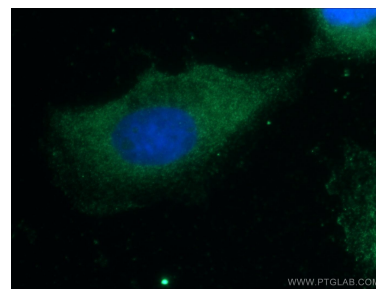
## Selected Validation Data



Immunohistochemical analysis of paraffin-embedded human testis tissue slide using 22301-1-AP (CCL27 Antibody) at dilution of 1:50 (under 10x lens).



Immunohistochemical analysis of paraffin-embedded human testis tissue slide using 22301-1-AP (CCL27 Antibody) at dilution of 1:50 (under 40x lens).



Immunofluorescent analysis of A431 cells using 22301-1-AP (CCL27 antibody) at dilution of 1:25 and Alexa Fluor 488-conjugated AffiniPure Goat Anti-Rabbit IgG(H+L).