

For Research Use Only

Amylin Polyclonal antibody

Catalog Number: 22305-1-AP



Basic Information

Catalog Number:

22305-1-AP

Size:

150ul , Concentration: 300 ug/ml by Nanodrop and 200 ug/ml by Bradford method using BSA as the standard;

Source:

Rabbit

Isotype:

IgG

GenBank Accession Number:

NM_000415

GeneID (NCBI):

3375

UNIPROT ID:

P10997

Full Name:

islet amyloid polypeptide

Calculated MW:

10 kDa

Purification Method:

Antigen Affinity purified

Recommended Dilutions:

IHC 1:20-1:200

Applications

Tested Applications:

IHC, ELISA

Species Specificity:

human, rat, mouse

Positive Controls:

IHC : human pancreas tissue, mouse pancreas tissue, rat pancreas tissue

Note-IHC: suggested antigen retrieval with TE buffer pH 9.0; (*) Alternatively, antigen retrieval may be performed with citrate buffer pH 6.0

Background Information

IAPP, also known as Amylin, is commonly found in pancreatic islets of patients suffering diabetes mellitus type II, or harboring a tumor of the pancreas that is derived from beta cells and secretes INS. IAPP is co-secreted with INS by pancreatic β -cells and largely contributes to glycemic control. Studies suggest that this protein, like the related beta-amyloid (A β) associated with Alzheimer's disease, can induce apoptotic cell-death in particular cultured cells, an effect that may be relevant to the development of type II diabetes.

Storage

Storage:

Store at -20°C. Stable for one year after shipment.

Storage Buffer:

PBS with 0.02% sodium azide and 50% glycerol pH 7.3.

Aliquoting is unnecessary for -20°C storage

*** 20ul sizes contain 0.1% BSA

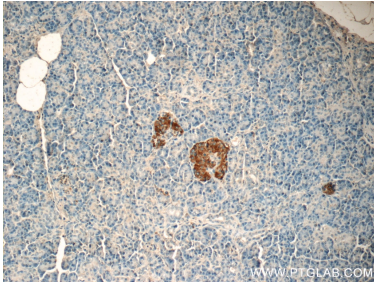
For technical support and original validation data for this product please contact:

T: 1 (888) 4PTGLAB (1-888-478-4522) (toll free in USA), or 1(312) 455-8498 (outside USA)

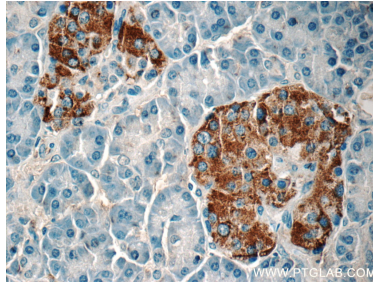
E: proteintech@ptglab.com
W: ptglab.com

This product is exclusively available under Proteintech Group brand and is not available to purchase from any other manufacturer.

Selected Validation Data



Immunohistochemical analysis of paraffin-embedded human pancreas tissue slide using 22305-1-AP (Amylin Antibody) at dilution of 1:50 (under 10x lens).



Immunohistochemical analysis of paraffin-embedded human pancreas tissue slide using 22305-1-AP (Amylin Antibody) at dilution of 1:50 (under 40x lens).