

For Research Use Only

# RCC1 Polyclonal antibody

Catalog Number: 22335-1-AP

1 Publications



## Basic Information

### Catalog Number:

22335-1-AP

### Size:

150ul, Concentration: 600 ug/ml by Nanodrop and 267 ug/ml by Bradford method using BSA as the standard;

### Source:

Rabbit

### Isotype:

IgG

### Immunogen Catalog Number:

AG17809

### GenBank Accession Number:

BC010067

### GeneID (NCBI):

1104

### UNIPROT ID:

P18754

### Full Name:

regulator of chromosome condensation 1

### Calculated MW:

421 aa, 45 kDa

### Observed MW:

45-50 kDa

### Purification Method:

Antigen affinity purification

### Recommended Dilutions:

WB 1:1000-1:5000

IP 0.5-4.0 ug for 1.0-3.0 mg of total protein lysate

IHC 1:50-1:500

IF/ICC 1:20-1:200

## Applications

### Tested Applications:

WB, IHC, IF/ICC, IP, ELISA

### Cited Applications:

IHC

### Species Specificity:

human, mouse, rat

### Cited Species:

human

**Note-IHC: suggested antigen retrieval with TE buffer pH 9.0; (\*) Alternatively, antigen retrieval may be performed with citrate buffer pH 6.0**

### Positive Controls:

WB: SH-SY5Y cells, HepG2 cells, mouse colon tissue, rat colon tissue

IP: HeLa cells,

IHC: mouse testis tissue, human small intestine tissue, human testis tissue

IF/ICC: HepG2 cells,

## Background Information

CHC1, also named as RCC1, promotes the exchange of ran-bound gdp by gtp. It is involved in the regulation of onset of chromosome condensation in the S-phase. Phosphorylation of RCC1 on serines located in or near its nuclear localization signal activates RCC1 to generate RanGTP on mitotic chromosomes, which is required for spindle assembly and chromosome segregation. This antibody is a rabbit polyclonal antibody raised against full length RCC1 of human origin.

## Notable Publications

Author	Pubmed ID	Journal	Application
Yuxiang Deng	34924821	Pathol Oncol Res	IHC

## Storage

### Storage:

Store at -20°C. Stable for one year after shipment.

### Storage Buffer:

PBS with 0.02% sodium azide and 50% glycerol pH 7.3.

Aliquoting is unnecessary for -20°C storage

\*\*\* 20ul sizes contain 0.1% BSA

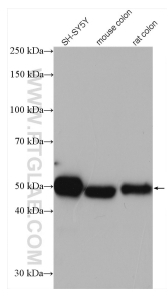
For technical support and original validation data for this product please contact:

T: 1 (888) 4PTGLAB (1-888-478-4522) (toll free in USA), or 1(312) 455-8498 (outside USA)

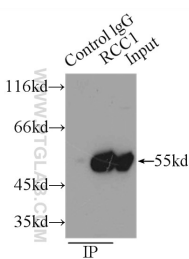
E: [proteintech@ptglab.com](mailto:proteintech@ptglab.com)  
W: [ptglab.com](http://ptglab.com)

This product is exclusively available under Proteintech Group brand and is not available to purchase from any other manufacturer.

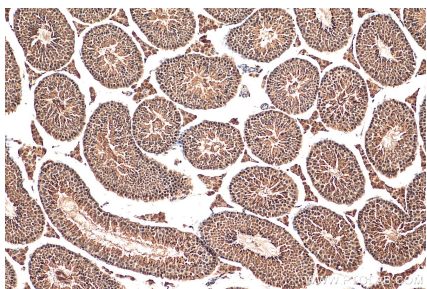
Selected Validation Data



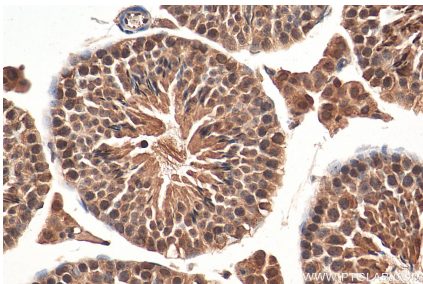
Various lysates were subjected to SDS PAGE followed by western blot with 22335-1-AP (RCC1 antibody) at dilution of 1:2500 incubated at room temperature for 1.5 hours.



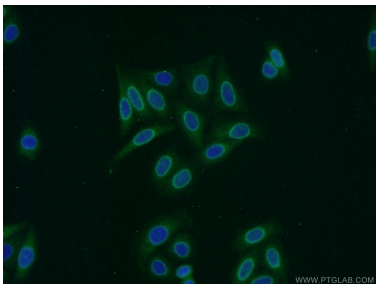
IP result of anti-RCC1 (IP:22335-1-AP, 3ug; Detection:22335-1-AP 1:1500) with HeLa cells lysate 3000ug.



Immunohistochemical analysis of paraffin-embedded mouse testis tissue slide using 22335-1-AP (RCC1 antibody) at dilution of 1:200 (under 10x lens). Heat mediated antigen retrieval with Tris-EDTA buffer (pH 9.0).



Immunohistochemical analysis of paraffin-embedded mouse testis tissue slide using 22335-1-AP (RCC1 antibody) at dilution of 1:200 (under 40x lens). Heat mediated antigen retrieval with Tris-EDTA buffer (pH 9.0).



Immunofluorescent analysis of HepG2 cells using 22335-1-AP (RCC1 antibody) at dilution of 1:50 and Alexa Fluor 488-conjugated AffiniPure Goat Anti-Rabbit IgG(H+L).