

For Research Use Only

Syntenin-1 Polyclonal antibody

Catalog Number: 22399-1-AP

Featured Product

23 Publications



Basic Information

Catalog Number:

22399-1-AP

Size:

150ul, Concentration: 800 ug/ml by Nanodrop;

Source:

Rabbit

Isotype:

IgG

Immunogen Catalog Number:

AG18078

GenBank Accession Number:

BC113674

GeneID (NCBI):

6386

UNIPROT ID:

O00560

Full Name:

syndecan binding protein (syntenin)

Calculated MW:

298 aa, 32 kDa

Observed MW:

32 kDa

Purification Method:

Antigen affinity purification

Recommended Dilutions:

WB 1:500-1:2000

IP 0.5-4.0 ug for 1.0-3.0 mg of total protein lysate

IHC 1:50-1:500

IF/ICC 1:200-1:800

Applications

Tested Applications:

WB, IHC, IF/ICC, IP, ELISA

Cited Applications:

WB, IHC

Species Specificity:

human, mouse

Cited Species:

human, mouse, monkey

Positive Controls:

WB: A549 cells, human placenta tissue, HeLa cells, HepG2 cells, MCF-7 cells

IP: HeLa cells,

IHC: human liver cancer tissue, mouse brain tissue, human heart tissue

IF/ICC: HeLa cells,

Note-IHC: suggested antigen retrieval with TE buffer pH 9.0; (*) Alternatively, antigen retrieval may be performed with citrate buffer pH 6.0

Background Information

Syntenin-1, also known as SDCBP (syndecan binding protein) and MDA-9 (melanoma differentiation-associated protein 9), was initially identified as a molecule linking syndecan-mediated signaling to the cytoskeleton. Syntenin-1 is a PDZ-domain-containing molecule that has many interaction partners, and regulates transmembrane-receptor trafficking, cell adhesion, tumor-cell metastasis and neuronal-synapse function. Syntenin-1 is primarily localized to membrane-associated adherens junctions and focal adhesions but is also found at the endoplasmic reticulum and nucleus.

Notable Publications

Author	Pubmed ID	Journal	Application
Qingyan Wu	36184032	Cell Mol Gastroenterol Hepatol	WB
Denghui Wei	32958903	Cell Res	WB
Ningye Ma	32902825	Cell Oncol (Dordr)	WB

Storage

Storage:

Store at -20°C. Stable for one year after shipment.

Storage Buffer:

PBS with 0.02% sodium azide and 50% glycerol pH 7.3.

Aliquoting is unnecessary for -20°C storage

*** 20ul sizes contain 0.1% BSA

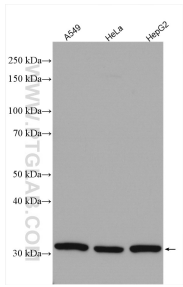
For technical support and original validation data for this product please contact:

T: 1 (888) 4PTGLAB (1-888-478-4522) (toll free in USA), or 1(312) 455-8498 (outside USA)

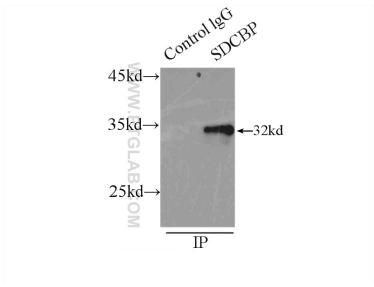
E: proteintech@ptglab.com
W: ptglab.com

This product is exclusively available under Proteintech Group brand and is not available to purchase from any other manufacturer.

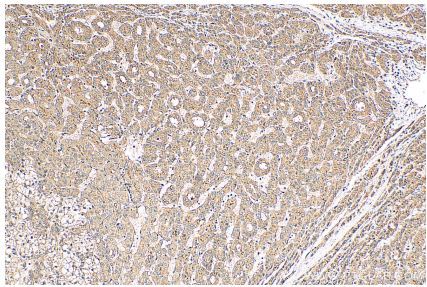
Selected Validation Data



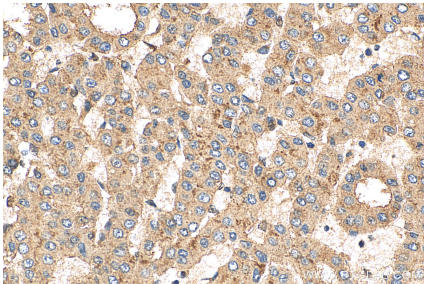
Various lysates were subjected to SDS PAGE followed by western blot with 22399-1-AP (Syntenin-1 antibody) at dilution of 1:1000 incubated at room temperature for 1.5 hours.



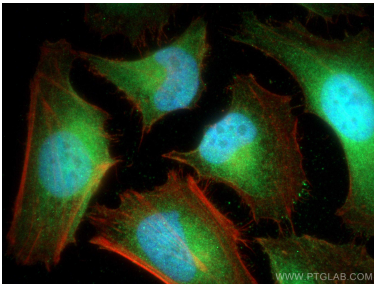
IP result of anti-Syntenin-1 (IP:22399-1-AP, 3ug; Detection:22399-1-AP 1:1000) with HeLa cells lysate 2500ug.



Immunohistochemical analysis of paraffin-embedded human liver cancer tissue slide using 22399-1-AP (Syntenin-1 antibody) at dilution of 1:200 (under 10x lens). Heat mediated antigen retrieval with Tris-EDTA buffer (pH 9.0).



Immunohistochemical analysis of paraffin-embedded human liver cancer tissue slide using 22399-1-AP (Syntenin-1 antibody) at dilution of 1:200 (under 40x lens). Heat mediated antigen retrieval with Tris-EDTA buffer (pH 9.0).



Immunofluorescent analysis of (4% PFA) fixed HeLa cells using Syntenin-1 antibody (22399-1-AP) at dilution of 1:400 and CoraLite®488-Conjugated Goat Anti-Rabbit IgG(H+L), CL594-Phalloidin (red).