

For Research Use Only

CSNK2B Polyclonal antibody

Catalog Number: 22418-1-AP

3 Publications



Basic Information

Catalog Number: 22418-1-AP	GenBank Accession Number: BC112017	Purification Method: Antigen affinity purification
Size: 150ul, Concentration: 450 ug/ml by Nanodrop;	GeneID (NCBI): 1460	Recommended Dilutions: WB 1:1000-1:6000 IHC 1:50-1:500
Source: Rabbit	UNIPROT ID: P67870	
Isotype: IgG	Full Name: casein kinase 2, beta polypeptide	
Immunogen Catalog Number: AG18134	Calculated MW: 215 aa, 25 kDa	
	Observed MW: 25-30 kDa	

Applications

Tested Applications: WB, IHC, FC (Intra), ELISA	Positive Controls:
Cited Applications: WB	WB: HeLa cells, HepG2 cells, NIH/3T3 cells, K-562 cells, MCF-7 cells
Species Specificity: human, mouse	IHC: human testis tissue, human thyroid tissue, mouse testis tissue, mouse brain tissue
Cited Species: human, mouse	

Note-IHC: suggested antigen retrieval with **TE buffer pH 9.0**; (*) Alternatively, antigen retrieval may be performed with **citrate buffer pH 6.0**

Background Information

CSNK2B is a ubiquitous protein kinase which regulates metabolic pathways, signal transduction, transcription, translation, and replication. The enzyme is composed of three subunits, alpha, alpha prime and beta, which form a tetrameric holoenzyme. The alpha and alpha prime subunits are catalytic, while the beta subunit serves regulatory functions. The enzyme localizes to the endoplasmic reticulum and the Golgi apparatus. It participates in Wnt signaling, and plays a complex role in regulating the basal catalytic activity of the alpha subunit.

Notable Publications

Author	Pubmed ID	Journal	Application
Hiroki Okanishi	36357940	Cancer Metab	WB
Yan Zhang	31987502	Biochem Biophys Res Commun	WB
Ann Y Park	38172257	Nat Immunol	WB

Storage

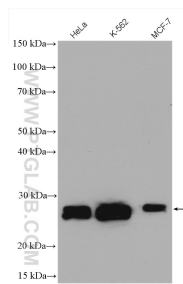
Storage:
Store at -20°C. Stable for one year after shipment.
Storage Buffer:
PBS with 0.02% sodium azide and 50% glycerol pH 7.3.
Aliquoting is unnecessary for -20°C storage

*** 20ul sizes contain 0.1% BSA

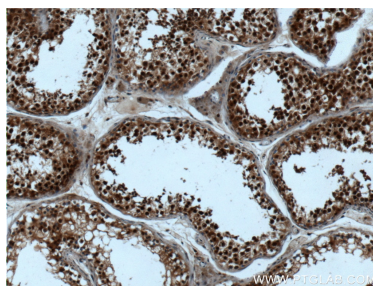
For technical support and original validation data for this product please contact:
T: 1 (888) 4PTGLAB (1-888-478-4522) (toll free in USA), or 1(312) 455-8498 (outside USA)
E: proteintech@ptglab.com
W: ptglab.com

This product is exclusively available under Proteintech Group brand and is not available to purchase from any other manufacturer.

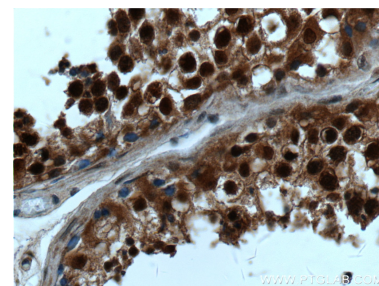
Selected Validation Data



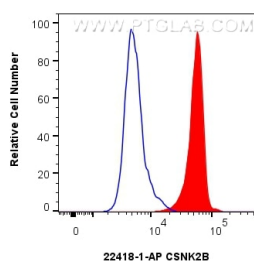
Various lysates were subjected to SDS PAGE followed by western blot with 22418-1-AP (Casein Kinase 2 beta antibody) at dilution of 1:3000 incubated at room temperature for 1.5 hours.



Immunohistochemical analysis of paraffin-embedded human testis tissue slide using 22418-1-AP (Casein Kinase 2 beta antibody at dilution of 1:200 (under 10x lens).



Immunohistochemical analysis of paraffin-embedded human testis tissue slide using 22418-1-AP (Casein Kinase 2 beta antibody at dilution of 1:200 (under 40x lens).



1×10^6 HeLa cells were intracellularly stained with 0.25 ug CSNK2B Polyclonal antibody (22418-1-AP) and CoraLite®488-Conjugated Goat Anti-Rabbit IgG(H+L) (SA00013-2)(red), or 0.25 ug Rabbit IgG control Rabbit PolyAb (30000-0-AP) (blue). Cells were fixed and permeabilized with Transcription Factor Staining Buffer Kit (PF00011).