

For Research Use Only

ERBB2IP Polyclonal antibody

Catalog Number: 22438-1-AP

Featured Product

3 Publications



Basic Information

Catalog Number:

22438-1-AP

Size:

150ul, Concentration: 800 ug/ml by Nanodrop and 467 ug/ml by Bradford method using BSA as the standard;

Source:

Rabbit

Isotype:

IgG

Immunogen Catalog Number:

AG18206

GenBank Accession Number:

BC115012

GeneID (NCBI):

55914

UNIPROT ID:

Q96RT1

Full Name:

erbb2 interacting protein

Calculated MW:

1412 aa, 158 kDa

Observed MW:

150-180 kDa

Purification Method:

Antigen affinity purification

Recommended Dilutions:

WB 1:1000-1:8000

IHC 1:50-1:500

IF/ICC 1:200-1:800

Applications

Tested Applications:

WB, IHC, IF/ICC, ELISA

Cited Applications:

WB, IHC

Species Specificity:

human

Cited Species:

human

Positive Controls:

WB : HeLa cells, MCF-7 cells

IHC : human kidney tissue,

IF/ICC : H9C2 cells,

Note-IHC: suggested antigen retrieval with TE buffer pH 9.0; (*) Alternatively, antigen retrieval may be performed with citrate buffer pH 6.0

Background Information

ERBB2IP is a cytoplasmic protein that contains leucine-rich repeats (LRR) and PSD95/Dlg1/zo-1 (PDZ) domain (thus named a LAP protein). ERBB2IP interacts, via its single PDZ domain, specifically with ErbB2, but not with ErbB3, ErbB4, or EGFR. It is colocalized with ErbB2 at the basolateral membranes of epithelial cells. In addition, ERBB2IP also interacts with PSD-95, Lano and with three p120-related catenins, eBPAG1 and the $\beta 4$ subunit of the $\alpha 6 \beta 4$ integrin, two major components of hemidesmosomes. The molecular weight of ERBB2IP was predicted 150-180 kDa by Western Blot. (PMID: 25288731, PMID: 24252174, PMID: 19289088)

Notable Publications

Author	Pubmed ID	Journal	Application
Ye Tan	32963622	Oncol Lett	WB, IHC
J J Lyons	28126831	J Exp Med	
Alejandra Valenzuela-Iglesias	30655320	Mol Cancer Res	WB

Storage

Storage:

Store at -20°C. Stable for one year after shipment.

Storage Buffer:

PBS with 0.02% sodium azide and 50% glycerol pH 7.3.

Aliquoting is unnecessary for -20°C storage

*** 20ul sizes contain 0.1% BSA

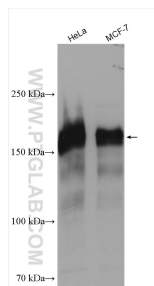
For technical support and original validation data for this product please contact:

T: 1 (888) 4PTGLAB (1-888-478-4522) (toll free in USA), or 1(312) 455-8498 (outside USA)

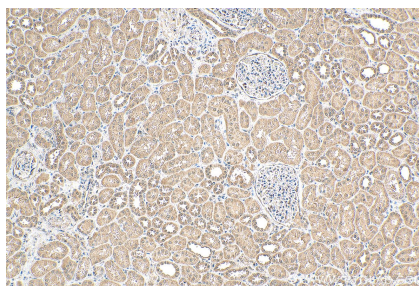
E: proteintech@ptglab.com
W: ptglab.com

This product is exclusively available under Proteintech Group brand and is not available to purchase from any other manufacturer.

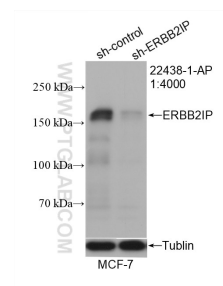
Selected Validation Data



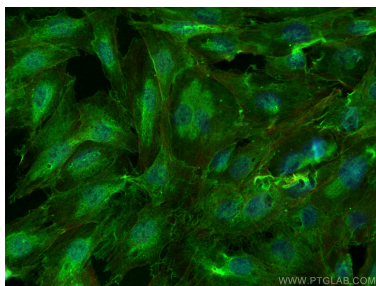
Various lysates were subjected to SDS PAGE followed by western blot with 22438-1-AP (ERBB2IP antibody) at dilution of 1:4000 incubated at room temperature for 1.5 hours.



Immunohistochemical analysis of paraffin-embedded human kidney tissue slide using 22438-1-AP (ERBB2IP antibody) at dilution of 1:200 (under 10x lens). Heat mediated antigen retrieval with Tris-EDTA buffer (pH 9.0).



WB result of ERBB2IP antibody (22438-1-AP; 1:4000; incubated at room temperature for 1.5 hours) with sh-Control and sh-ERBB2IP transfected MCF-7 cells.



Immunofluorescent analysis of (4% PFA) fixed H9C2 cells using ERBB2IP antibody (22438-1-AP) at dilution of 1:400 and Coralite®488-Conjugated AffiniPure Goat Anti-Rabbit IgG(H+L) (SA00013-2), CL594-Phalloidin (red).