

For Research Use Only

PKLR Polyclonal antibody

Catalog Number: 22456-1-AP

Featured Product

17 Publications



Basic Information

Catalog Number:

22456-1-AP

Size:

150ul, Concentration: 300 ug/ml by Nanodrop;

Source:

Rabbit

Isotype:

IgG

Immunogen Catalog Number:

AG17933

GenBank Accession Number:

BC025737

GeneID (NCBI):

5313

UNIPROT ID:

P30613

Full Name:

pyruvate kinase, liver and RBC

Calculated MW:

574 aa, 62 kDa

Observed MW:

58-62 kDa

Purification Method:

Antigen affinity purification

Recommended Dilutions:

WB 1:500-1:3000

IHC 1:50-1:500

Applications

Tested Applications:

WB, IHC, ELISA

Cited Applications:

WB, IHC, IF, CoIP

Species Specificity:

human, mouse, rat

Cited Species:

human, mouse, rat

Note-IHC: suggested antigen retrieval with TE buffer pH 9.0; (*) Alternatively, antigen retrieval may be performed with citrate buffer pH 6.0

Positive Controls:

WB : HepG2 cells, mouse skeletal muscle tissue, multi-cells/tissue, mouse muscle/liver tissue, mouse heart tissue, 293 cell, HepG2.MCF7 cells, HeLa cells, MCF-7 cells, human kidney tissue, human liver tissue, NIH/3T3 cells, HEK-293 cells, Raji cells

IHC : human lung cancer tissue, human breast cancer tissue

Background Information

PKLR(Pyruvate kinase isozymes R/L) is also named as PK1,PKL,which is a glycolytic enzyme that catalyzes the transphosphorylation from phosphoenolpyruvate (PEP) to ADP, yielding pyruvate and ATP. It is the last step of the glycolytic pathway and is essentially irreversible.It belongs to the pyruvate kinase family and There are 4 isozymes of pyruvate kinase in mammals: L, R, M1 and M2. L type is major isozyme in the liver, R is found in red cells, M1 is the main form in muscle, heart and brain, and M2 is found in early fetal tissues.Defects in PKLR are the cause of pyruvate kinase hyperactivity (PKHYP) and pyruvate kinase deficiency of red cells (PKRD).It can form a homotetramer(PMID:11960989).

Notable Publications

Author	Pubmed ID	Journal	Application
Zhijun Liu	34601133	Mol Ther	WB,IHC
Yukimasa Takeda	24831725	PLoS Genet	WB
Wei Lu	27283076	Sci Rep	WB,IHC

Storage

Storage:

Store at -20°C. Stable for one year after shipment.

Storage Buffer:

PBS with 0.02% sodium azide and 50% glycerol pH 7.3.

Aliquoting is unnecessary for -20°C storage

*** 20ul sizes contain 0.1% BSA

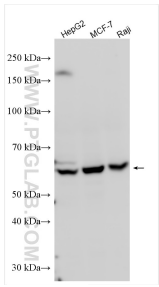
For technical support and original validation data for this product please contact:

T: 1 (888) 4PTGLAB (1-888-478-4522) (toll free in USA), or 1(312) 455-8498 (outside USA)

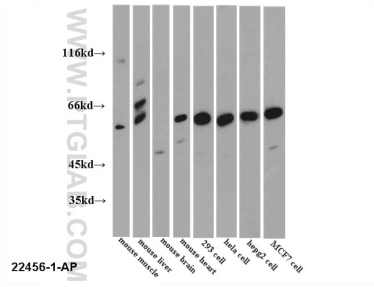
E: proteintech@ptglab.com
W: ptglab.com

This product is exclusively available under Proteintech Group brand and is not available to purchase from any other manufacturer.

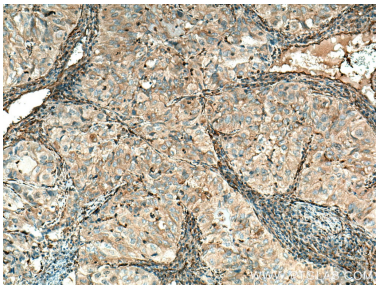
Selected Validation Data



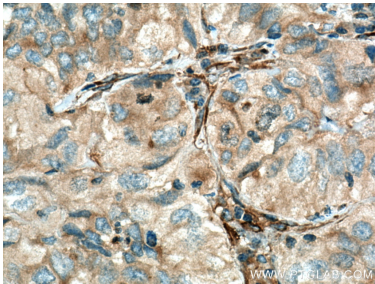
Various lysates were subjected to SDS PAGE followed by western blot with 22456-1-AP (PKLR antibody) at dilution of 1:1500 incubated at room temperature for 1.5 hours.



WB results of 22456-1-AP.



Immunohistochemical analysis of paraffin-embedded human lung cancer tissue slide using 22456-1-AP (PKLR antibody) at dilution of 1:200 (under 10x lens). Heat mediated antigen retrieval with Tris-EDTA buffer (pH 9.0).



Immunohistochemical analysis of paraffin-embedded human lung cancer tissue slide using 22456-1-AP (PKLR antibody) at dilution of 1:200 (under 40x lens). Heat mediated antigen retrieval with Tris-EDTA buffer (pH 9.0).