

For Research Use Only

EAAT2 Polyclonal antibody

Catalog Number: 22515-1-AP

24 Publications



Basic Information

Catalog Number:

22515-1-AP

Size:

150ul, Concentration: 300 ug/ml by Nanodrop;

Source:

Rabbit

Isotype:

IgG

Immunogen Catalog Number:

AG18247

GenBank Accession Number:

BC132768

GeneID (NCBI):

6506

UNIPROT ID:

P43004

Full Name:

solute carrier family 1 (glial high affinity glutamate transporter), member 2

Calculated MW:

574 aa, 62 kDa

Observed MW:

60-70 kDa, 140 kDa

Purification Method:

Antigen affinity purification

Recommended Dilutions:

WB 1:5000-1:50000

IP 0.5-4.0 ug for 1.0-3.0 mg of total protein lysate

Applications

Tested Applications:

WB, IP, ELISA

Cited Applications:

WB, IHC, IF

Species Specificity:

human, mouse, rat

Cited Species:

human, mouse, rat, pig

Positive Controls:

WB : mouse brain tissue, rat brain tissue

IP : mouse brain tissue,

Background Information

EAAT2 (also known as GLT-1), is encoded by SLC1A2 and is a glutamate transporter which can clear the majority of extracellular glutamate in brain and prevent brain seizures. Three isoforms of EAAT2 exist due to the alternative splicing. In addition to the 65-70 kDa monomer form, 130-150 kDa dimer of EAAT2 can also be observed on SDS-PAGE. (PMID: 22114258)

Notable Publications

Author	Pubmed ID	Journal	Application
Wenlong Zhang	33093440	Cell Death Dis	WB
Di Qu	36254458	ACS Chem Neurosci	WB, IF
Fanli Kong	36440503	Eur J Neurosci	WB, IF

Storage

Storage:

Store at -20°C. Stable for one year after shipment.

Storage Buffer:

PBS with 0.02% sodium azide and 50% glycerol pH 7.3.

Aliquoting is unnecessary for -20°C storage

*** 20ul sizes contain 0.1% BSA

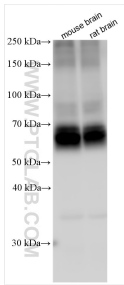
For technical support and original validation data for this product please contact:

T: 1 (888) 4PTGLAB (1-888-478-4522) (toll free in USA), or 1(312) 455-8498 (outside USA)

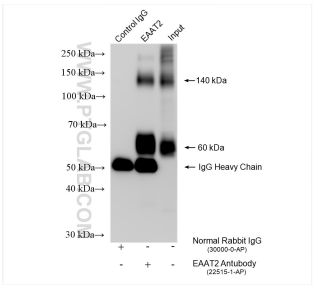
E: proteintech@ptglab.com
W: ptglab.com

This product is exclusively available under Proteintech Group brand and is not available to purchase from any other manufacturer.

Selected Validation Data



Various lysates were subjected to SDS PAGE followed by western blot with 22515-1-AP (EAAT2 antibody) at dilution of 1:10000 incubated at room temperature for 1.5 hours.



IP result of anti-EAAT2 (IP:22515-1-AP, 4ug; Detection:22515-1-AP 1:8000) with mouse brain tissue lysate 2100 ug.