

For Research Use Only

ABHD15 Polyclonal antibody

Catalog Number: 22526-1-AP

Featured Product

2 Publications



Basic Information

Catalog Number:

22526-1-AP

Size:

150ul, Concentration: 650 ug/ml by Nanodrop and 340 ug/ml by Bradford method using BSA as the standard;

Source:

Rabbit

Isotype:

IgG

Immunogen Catalog Number:

AG18334

GenBank Accession Number:

BC012476

GeneID (NCBI):

116236

UNIPROT ID:

Q6UXT9

Full Name:

abhydrolase domain containing 15

Calculated MW:

468 aa, 52 kDa

Observed MW:

52 kDa

Purification Method:

Antigen affinity purification

Recommended Dilutions:

WB 1:200-1:1000

Applications

Tested Applications:

WB, ELISA

Cited Applications:

WB

Species Specificity:

human, mouse

Cited Species:

mouse

Positive Controls:

WB : mouse lung tissue, Transfected HEK-293 cells

Background Information

ABHD15 belongs to the α/β -hydrolase superfamily which consists of various lipases, esterases, and proteases that share an α/β fold as a common structural feature. ABHD15 is highly expressed in adipose tissues and is required for the anti-lipolytic action of INS in white adipose tissue (WAT). ABHD15 expression is decreased in humans with obesity and diabetes compared to humans with obesity and normal glucose tolerance, identifying ABHD15 as a potential therapeutic target to mitigate INS resistance (PMID: 29768196).

Notable Publications

Author	Pubmed ID	Journal	Application
Jacqueline Stöckli	31105056	Mol Metab	WB
Wenmin Xia	29768196	Cell Rep	WB

Storage

Storage:

Store at -20°C. Stable for one year after shipment.

Storage Buffer:

PBS with 0.02% sodium azide and 50% glycerol pH 7.3.

Aliquoting is unnecessary for -20°C storage

*** 20ul sizes contain 0.1% BSA

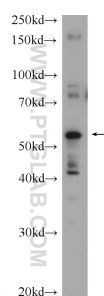
For technical support and original validation data for this product please contact:

T: 1 (888) 4PTGLAB (1-888-478-4522) (toll free in USA), or 1(312) 455-8498 (outside USA)

E: proteintech@ptglab.com
W: ptglab.com

This product is exclusively available under Proteintech Group brand and is not available to purchase from any other manufacturer.

Selected Validation Data



mouse lung tissue were subjected to SDS PAGE followed by western blot with 22526-1-AP (ABHD15 Antibody) at dilution of 1:300 incubated at room temperature for 1.5 hours.