

For Research Use Only

WDR61 Polyclonal antibody

Catalog Number: 22536-1-AP

6 Publications



Basic Information

Catalog Number:

22536-1-AP

Size:

150ul, Concentration: 450 ug/ml by Nanodrop and 360 ug/ml by Bradford method using BSA as the standard;

Source:

Rabbit

Isotype:

IgG

Immunogen Catalog Number:

AG18443

GenBank Accession Number:

BC010080

GeneID (NCBI):

80349

UNIPROT ID:

Q9GZ53

Full Name:

WD repeat domain 61

Calculated MW:

305 aa, 34 kDa

Observed MW:

33 kDa

Purification Method:

Antigen affinity purification

Recommended Dilutions:

WB 1:500-1:3000

IP 0.5-4.0 ug for 1.0-3.0 mg of total protein lysate

IHC 1:50-1:500

IF/ICC 1:50-1:500

Applications

Tested Applications:

WB, IHC, IF/ICC, IP, ELISA

Cited Applications:

WB, IP

Species Specificity:

human, mouse, rat

Cited Species:

human, mouse

Positive Controls:

WB: HeLa cells, mouse liver tissue, HepG2 cells

IP: mouse brain tissue,

IHC: mouse testis tissue, human breast cancer tissue

IF/ICC: HeLa cells,

Note-IHC: suggested antigen retrieval with TE buffer pH 9.0; (*) Alternatively, antigen retrieval may be performed with citrate buffer pH 6.0

Background Information

Component of the PAF1 complex (PAF1C) which has multiple functions during transcription by RNA polymerase II and is implicated in regulation of development and maintenance of embryonic stem cell pluripotency (refer to UniProt). Catalog#22536-1-AP is a rabbit polyclonal antibody raised against the full-length of human WDR61. The MW of this protein is 33 kDa, and this antibody specially recognises the 33 kDa protein.

Notable Publications

Author	Pubmed ID	Journal	Application
Gang Xiang	35551175	Cell Death Dis	WB
Robinson Triboulet	39235218	Mol Cancer Ther	WB
Yayan Hou	38708718	FEBS J	WB

Storage

Storage:

Store at -20°C. Stable for one year after shipment.

Storage Buffer:

PBS with 0.02% sodium azide and 50% glycerol pH 7.3.

Aliquoting is unnecessary for -20°C storage

*** 20ul sizes contain 0.1%BSA

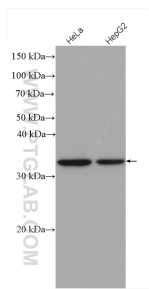
For technical support and original validation data for this product please contact:

T: 1 (888) 4PTGLAB (1-888-478-4522) (toll free in USA), or 1(312) 455-8498 (outside USA)

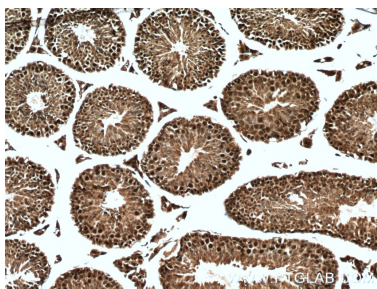
E: proteintech@ptglab.com
W: ptglab.com

This product is exclusively available under Proteintech Group brand and is not available to purchase from any other manufacturer.

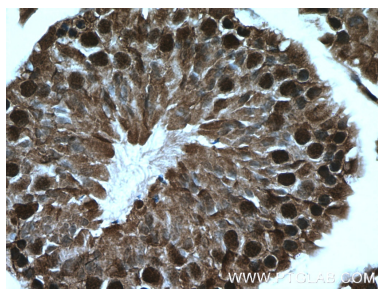
Selected Validation Data



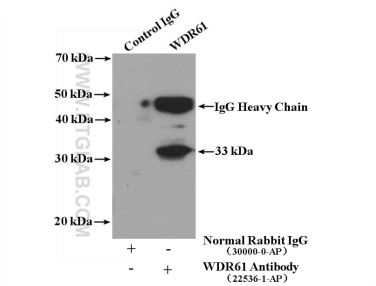
Various lysates were subjected to SDS PAGE followed by western blot with 22536-1-AP (WDR61 antibody) at dilution of 1:1500 incubated at room temperature for 1.5 hours.



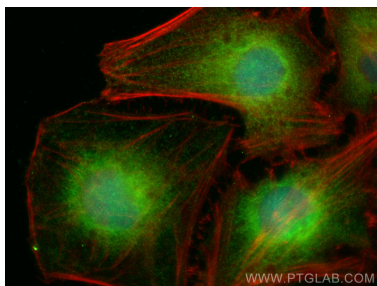
Immunohistochemical analysis of paraffin-embedded mouse testis tissue slide using 22536-1-AP (WDR61 antibody) at dilution of 1:200 (under 10x lens. Heat mediated antigen retrieval with Tris-EDTA buffer (pH 9.0).



Immunohistochemical analysis of paraffin-embedded mouse testis tissue slide using 22536-1-AP (WDR61 antibody) at dilution of 1:200 (under 40x lens. Heat mediated antigen retrieval with Tris-EDTA buffer (pH 9.0).



IP result of anti-WDR61 (IP:22536-1-AP, 4ug; Detection:22536-1-AP 1:1000) with mouse brain tissue lysate 4000ug.



Immunofluorescent analysis of (4% PFA) fixed HeLa cells using WDR61 antibody (22536-1-AP) at dilution of 1:200 and CoraLite®488-Conjugated AffiniPure Goat Anti-Rabbit IgG(H+L) (SA00013-2), CL594-phalloidin (red).