

For Research Use Only

# PRICKLE1 Polyclonal antibody

Catalog Number: 22589-1-AP

Featured Product

9 Publications



## Basic Information

### Catalog Number:

22589-1-AP

### Size:

150ul, Concentration: 1000 ug/ml by Nanodrop;

### Source:

Rabbit

### Isotype:

IgG

### Immunogen Catalog Number:

AG18407

### GenBank Accession Number:

BC114939

### GeneID (NCBI):

144165

### UNIPROT ID:

Q96MT3

### Full Name:

prickle homolog 1 (Drosophila)

### Calculated MW:

831 aa, 94 kDa

### Observed MW:

94 kDa, 55-60 kDa

### Purification Method:

Antigen Affinity purified

### Recommended Dilutions:

WB 1:500-1:2000

IP 0.5-4.0 ug for 1.0-3.0 mg of total protein lysate

IHC 1:250-1:1000

IF-P 1:50-1:500

## Applications

### Tested Applications:

WB, IHC, IF-P, FC (Intra), IP, ELISA

### Cited Applications:

WB, IF

### Species Specificity:

human, mouse

### Cited Species:

human, mouse, chicken

**Note-IHC: suggested antigen retrieval with TE buffer pH 9.0; (\*) Alternatively, antigen retrieval may be performed with citrate buffer pH 6.0**

### Positive Controls:

WB : mouse brain tissue, Neuro-2a cells

IP : mouse brain tissue,

IHC : mouse cerebellum tissue,

IF-P : mouse cerebellum tissue,

## Background Information

PRICKLE1, also known as RILP, EPM1B, encodes a cytoplasmic protein with an N-terminal PET (Pk, Espinas, Testin) domain, three LIM domains and a C-terminal PKH (prickle homologous) domain. PRICKLE1 is expressed at the highest levels in placenta and lower levels in lung, liver, kidney and pancreas (PMID: 12525887). PRICKLE1 localizes to the nuclear membrane and has been implicated in the nuclear trafficking of the transcription repressors REST/NRSF and REST4. Mutations in PRICKLE1 have been linked to progressive myoclonus epilepsy (PMID: 18976727).

## Notable Publications

Author	Pubmed ID	Journal	Application
Yue Ban	34597683	Exp Neurol	WB
Yue Ban	34613779	Sci Adv	WB
Duanfeng Jiang	34001134	J Transl Med	WB

## Storage

### Storage:

Store at -20°C. Stable for one year after shipment.

### Storage Buffer:

PBS with 0.02% sodium azide and 50% glycerol pH 7.3.

Aliquoting is unnecessary for -20°C storage

\*\*\* 20ul sizes contain 0.1% BSA

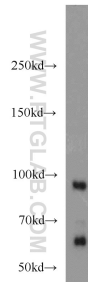
For technical support and original validation data for this product please contact:

T: 1 (888) 4PTGLAB (1-888-478-4522) (toll free in USA), or 1(312) 455-8498 (outside USA)

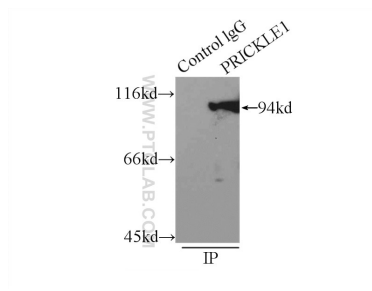
E: [proteintech@ptglab.com](mailto:proteintech@ptglab.com)  
W: [ptglab.com](http://ptglab.com)

This product is exclusively available under Proteintech Group brand and is not available to purchase from any other manufacturer.

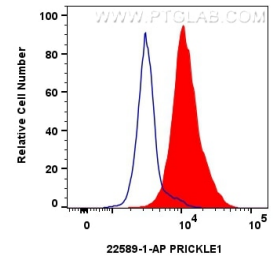
## Selected Validation Data



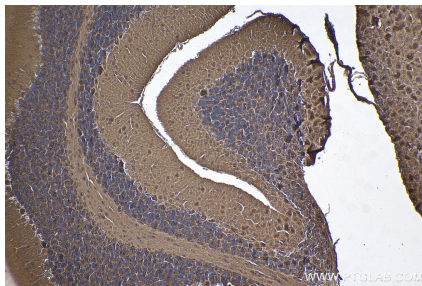
mouse brain tissue were subjected to SDS PAGE followed by western blot with 22589-1-AP (PRICKLE1 antibody) at dilution of 1:1000 incubated at room temperature for 1.5 hours.



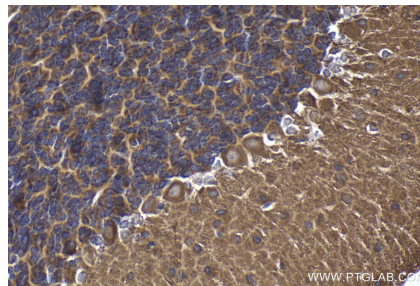
IP result of anti-PRICKLE1 (IP:22589-1-AP, 3ug; Detection:22589-1-AP 1:1000) with mouse brain tissue lysate 7000ug.



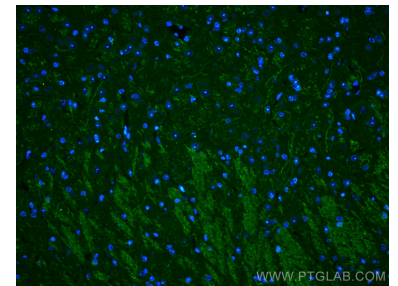
1x10<sup>6</sup> HeLa cells were intracellularly stained with 0.8 ug Anti-Human PRICKLE1 (22589-1-AP)(red), or 0.8 ug Rabbit IgG control Rabbit PolyAb (30000-O-AP) (blue). Cells were fixed and permeabilized with Transcription Factor Staining Buffer Kit (PF00011).



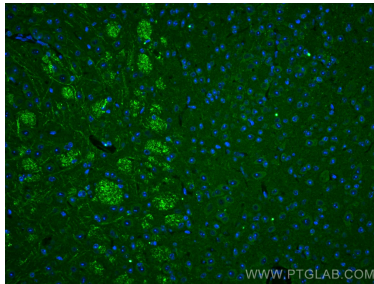
Immunohistochemical analysis of paraffin-embedded mouse cerebellum tissue slide using 22589-1-AP (PRICKLE1 antibody) at dilution of 1:500 (under 10x lens). Heat mediated antigen retrieval with Tris-EDTA buffer (pH 9.0).



Immunohistochemical analysis of paraffin-embedded mouse cerebellum tissue slide using 22589-1-AP (PRICKLE1 antibody) at dilution of 1:500 (under 40x lens). Heat mediated antigen retrieval with Tris-EDTA buffer (pH 9.0).



Immunofluorescent analysis of (4% PFA) fixed mouse cerebellum tissue using PRICKLE1 antibody (22589-1-AP) at dilution of 1:200 and CoraLite®488-Conjugated AffiniPure Goat Anti-Rabbit IgG(H+L).



Immunofluorescent analysis of (4% PFA) fixed mouse cerebellum tissue using PRICKLE1 antibody (22589-1-AP) at dilution of 1:200 and CoraLite®488-Conjugated AffiniPure Goat Anti-Rabbit IgG(H+L).