

For Research Use Only

ESRRB Polyclonal antibody

Catalog Number: 22644-1-AP

Featured Product

6 Publications



Basic Information

Catalog Number: 22644-1-AP	GenBank Accession Number: BC131517	Purification Method: Antigen affinity purification
Size: 150ul, Concentration: 1000 µg/ml by Nanodrop and 500 µg/ml by Bradford method using BSA as the standard;	GeneID (NCBI): 2103	Recommended Dilutions: WB 1:500-1:2000 IP 0.5-4.0 ug for IP and 1:200-1:1000 for WB
Source: Rabbit	Full Name: estrogen-related receptor beta	
Isotype: IgG	Calculated MW: 508 aa, 56 kDa	
Immunogen Catalog Number: AG18523	Observed MW: 48-56 kDa	

Applications

Tested Applications: IP, WB, ELISA	Positive Controls: WB : PC-13 cells, A549 cells
Cited Applications: IF, IHC, WB	IP : A549 cells,
Species Specificity: human, mouse, rat	
Cited Species: human, mouse	

Background Information

Estrogen related receptor beta (ESRRB), a NR3 Steroid Receptor, has been shown to affect early placental development. Also it can act as a repressor of transcriptional activity mediated by the glucocorticoid receptor (GR). It binds as a monomer to the extended half-site TNAAGTGCA and as a homodimer to the estrogen response element (ERE), palindromic thyroid hormone response element (TRE(pal)), and SF-1 response element, but not to the glucocorticoid response element (GRE). Estrogen related receptor beta mutations lead to abnormal development of the chorion and defective diploid trophoblast proliferation, and are lethal during midgestation. Expression has been documented in mice in the extra embryonic ectoderm that gives rise to the chorion. ESTs have been isolated from normal human eye, lung, and testis libraries. The ligand for the receptor is PPARgamma coactivator 1 (PGC-1) beta. ESRRB exists various isoforms and molecular weight of each isoform is 48 kDa, 55 kDa and 56 kDa.

Notable Publications

Author	Pubmed ID	Journal	Application
Shuai Yu	34616727	Front Cell Dev Biol	WB,IF
Kwon Tae You	26443847	Genes Dev	WB,IF
Joshua E Burda	35614216	Nature	IHC

Storage

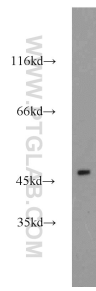
Storage:
Store at -20°C. Stable for one year after shipment.
Storage Buffer:
PBS with 0.02% sodium azide and 50% glycerol pH 7.3.
Aliquoting is unnecessary for -20°C storage

*** 20ul sizes contain 0.1% BSA

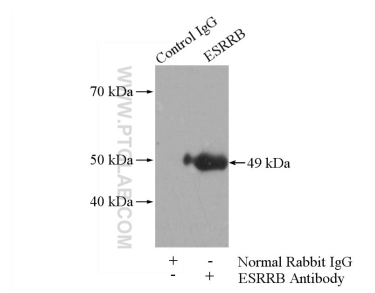
For technical support and original validation data for this product please contact:
T: 1 (888) 4PTGLAB (1-888-478-4522) (toll free in USA), or 1(312) 455-8498 (outside USA)
E: proteintech@ptglab.com
W: ptglab.com

This product is exclusively available under Proteintech Group brand and is not available to purchase from any other manufacturer.

Selected Validation Data



PC-13 cells were subjected to SDS PAGE followed by western blot with 22644-1-AP (ESRRB antibody) at dilution of 1:1000 incubated at room temperature for 1.5 hours.



IP Result of anti-ESRRB (IP:22644-1-AP, 4ug; Detection:22644-1-AP 1:300) with A549 cells lysate 1040ug.