

For Research Use Only

# FSHR Polyclonal antibody

Catalog Number: 22665-1-AP

Featured Product

63 Publications



## Basic Information

### Catalog Number:

22665-1-AP

### Size:

150ul, Concentration: 700 ug/ml by Nanodrop;

### Source:

Rabbit

### Isotype:

IgG

### Immunogen Catalog Number:

AG18158

### GenBank Accession Number:

BC118548

### GeneID (NCBI):

2492

### UNIPROT ID:

P23945

### Full Name:

follicle stimulating hormone receptor

### Calculated MW:

695 aa, 78 kDa

### Observed MW:

71-78 kDa

### Purification Method:

Antigen affinity purification

### Recommended Dilutions:

WB 1:500-1:3000

IHC 1:50-1:500

## Applications

### Tested Applications:

WB, IHC, ELISA

### Cited Applications:

WB, IHC

### Species Specificity:

human, mouse, rat

### Cited Species:

human, mouse, rat, pig, chicken, bovine, sheep, goat

**Note-IHC: suggested antigen retrieval with TE buffer pH 9.0; (\*) Alternatively, antigen retrieval may be performed with citrate buffer pH 6.0**

### Positive Controls:

WB : mouse ovary tissue, rat ovary tissue, DU 145 cells, PC-3 cells, HeLa cells

IHC : mouse ovary tissue,

## Notable Publications

Author	Pubmed ID	Journal	Application
Dailin Tan	32994568	Gene Ther	WB
Shotaro Hayashi	32961443	Redox Biol	IHC
Huidan Wang	26358501	Sci Rep	WB

## Storage

### Storage:

Store at -20°C. Stable for one year after shipment.

### Storage Buffer:

PBS with 0.02% sodium azide and 50% glycerol, pH7.3

Aliquoting is unnecessary for -20°C storage

\*\*\* 20ul sizes contain 0.1% BSA

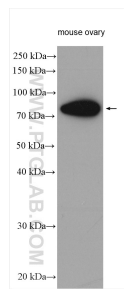
For technical support and original validation data for this product please contact:

T: 1 (888) 4PTGLAB (1-888-478-4522) (toll free in USA), or 1(312) 455-8498 (outside USA)

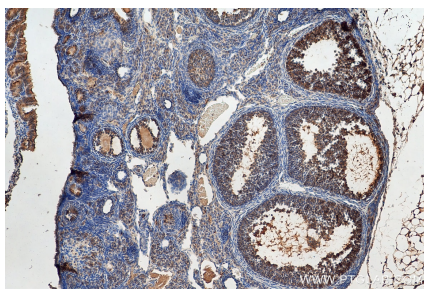
E: [proteintech@ptglab.com](mailto:proteintech@ptglab.com)  
W: [ptglab.com](http://ptglab.com)

This product is exclusively available under Proteintech Group brand and is not available to purchase from any other manufacturer.

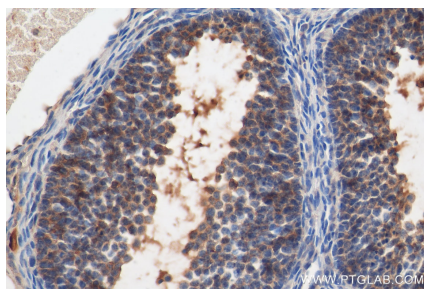
## Selected Validation Data



mouse ovary tissue were subjected to SDS PAGE followed by western blot with 22665-1-AP (FSHR antibody) at dilution of 1:1500 incubated at room temperature for 1.5 hours.



Immunohistochemical analysis of paraffin-embedded mouse ovary tissue slide using 22665-1-AP (FSHR antibody) at dilution of 1:200 (under 10x lens). Heat mediated antigen retrieval with Tris-EDTA buffer (pH 9.0).



Immunohistochemical analysis of paraffin-embedded mouse ovary tissue slide using 22665-1-AP (FSHR antibody) at dilution of 1:200 (under 40x lens). Heat mediated antigen retrieval with Tris-EDTA buffer (pH 9.0).