

For Research Use Only

# PPP4R2 Polyclonal antibody

Catalog Number: 22676-1-AP

1 Publications



## Basic Information

### Catalog Number:

22676-1-AP

### Size:

150ul, Concentration: 500 ug/ml by Nanodrop and 367 ug/ml by Bradford method using BSA as the standard;

### Source:

Rabbit

### Isotype:

IgG

### Immunogen Catalog Number:

AG18486

### GenBank Accession Number:

BC110889

### GeneID (NCBI):

151987

### UNIPROT ID:

Q9NY27

### Full Name:

protein phosphatase 4, regulatory subunit 2

### Calculated MW:

360aa, 40 kDa; 495aa, 55 kDa

### Observed MW:

65 kDa

### Purification Method:

Antigen affinity purification

### Recommended Dilutions:

WB 1:500-1:2000

IP 0.5-4.0 ug for 1.0-3.0 mg of total protein lysate

IHC 1:20-1:200

IF/ICC 1:50-1:500

## Applications

### Tested Applications:

WB, IHC, IF/ICC, IP, ELISA

### Cited Applications:

WB, ColP

### Species Specificity:

human

### Cited Species:

human

**Note-IHC: suggested antigen retrieval with TE buffer pH 9.0; (\*) Alternatively, antigen retrieval may be performed with citrate buffer pH 6.0**

### Positive Controls:

WB: A549 cells, HepG2 cells

IP: HepG2 cells,

IHC: human liver cancer tissue, human pancreas tissue

IF/ICC: HepG2 cells,

## Background Information

PPP4R2 is a regulatory subunit of protein phosphatase-4 (PPP4), a protein serine/threonine phosphatase implicated in microtubule organization at centrosomes and DNA double-strand break repair. The deduced 453-amino acid protein contains several potential phosphorylation sites and has a calculated molecular mass of 50.4 kD. Immunofluorescent analysis of HeLa and A431 cells revealed prominent localization of PPP4R2 at centrosomes, with weaker staining of cytoplasm and nucleus (PMID: 10769191).

## Notable Publications

Author	Pubmed ID	Journal	Application
Zhengwei Liang	38513962	Exp Cell Res	WB, ColP

## Storage

### Storage:

Store at -20°C. Stable for one year after shipment.

### Storage Buffer:

PBS with 0.02% sodium azide and 50% glycerol pH 7.3.

Aliquoting is unnecessary for -20°C storage

\*\*\* 20ul sizes contain 0.1% BSA

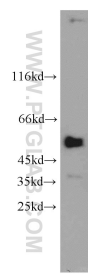
For technical support and original validation data for this product please contact:

T: 1 (888) 4PTGLAB (1-888-478-4522) (toll free in USA), or 1(312) 455-8498 (outside USA)

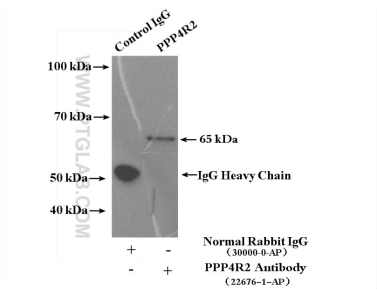
E: [proteintech@ptglab.com](mailto:proteintech@ptglab.com)  
W: [ptglab.com](http://ptglab.com)

This product is exclusively available under Proteintech Group brand and is not available to purchase from any other manufacturer.

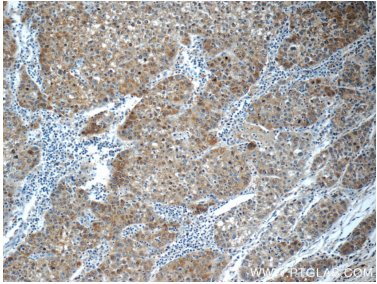
Selected Validation Data



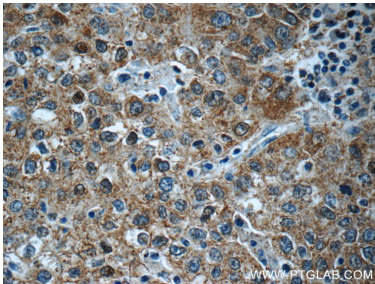
A549 cells were subjected to SDS PAGE followed by western blot with 22676-1-AP (PPP4R2 antibody) at dilution of 1:1000 incubated at room temperature for 1.5 hours.



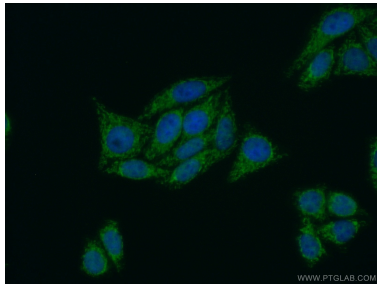
IP result of anti-PPP4R2 (IP:22676-1-AP, 4ug; Detection:22676-1-AP 1:1000) with HepG2 cells lysate 3600ug.



Immunohistochemical analysis of paraffin-embedded human liver cancer tissue slide using 22676-1-AP (PPP4R2 Antibody) at dilution of 1:50 (under 10x lens).



Immunohistochemical analysis of paraffin-embedded human liver cancer tissue slide using 22676-1-AP (PPP4R2 Antibody) at dilution of 1:50 (under 40x lens).



Immunofluorescent analysis of (10% Formaldehyde) fixed HepG2 cells using 22676-1-AP (PPP4R2 antibody) at dilution of 1:50 and Alexa Fluor 488-conjugated Goat Anti-Rabbit IgG(H+L).