

For Research Use Only

# KDM5D Polyclonal antibody

Catalog Number: 22739-1-AP

3 Publications



## Basic Information

Catalog Number:

22739-1-AP

Size:

150ul, Concentration: 850 ug/ml by Nanodrop;

Source:

Rabbit

Isotype:

IgG

Immunogen Catalog Number:

AG18690

GenBank Accession Number:

BC146767

GeneID (NCBI):

8284

UNIPROT ID:

Q9BY66

Full Name:

lysine (K)-specific demethylase 5D

Calculated MW:

1482 aa, 167 kDa

Observed MW:

70 kDa, 175 kDa

Purification Method:

Antigen affinity purification

Recommended Dilutions:

WB 1:500-1:3000

## Applications

Tested Applications:

WB, ELISA

Cited Applications:

WB, IHC

Species Specificity:

human

Cited Species:

human

Positive Controls:

WB : TF-1 cells, Jurkat cells

## Notable Publications

Author	Pubmed ID	Journal	Application
Shi-Ting Li	32694775	Nat Metab	WB
Wenxia Xu	29989047	Int J Biol Sci	WB
Georg Schäfer	34804837	Transl Androl Urol	IHC

## Storage

Storage:

Store at -20°C. Stable for one year after shipment.

Storage Buffer:

PBS with 0.02% sodium azide and 50% glycerol pH 7.3.

Aliquoting is unnecessary for -20°C storage

\*\*\* 20ul sizes contain 0.1% BSA

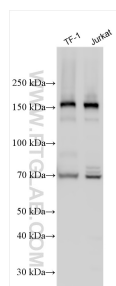
For technical support and original validation data for this product please contact:

T: 1 (888) 4PTGLAB (1-888-478-4522) (toll free in USA), or 1(312) 455-8498 (outside USA)

E: [proteintech@ptglab.com](mailto:proteintech@ptglab.com)  
W: [ptglab.com](http://ptglab.com)

This product is exclusively available under Proteintech Group brand and is not available to purchase from any other manufacturer.

## Selected Validation Data



Various lysates were subjected to SDS PAGE followed by western blot with 22739-1-AP (KDM5D antibody) at dilution of 1:1500 incubated at room temperature for 1.5 hours.