

For Research Use Only

# CCS Polyclonal antibody

Catalog Number: 22802-1-AP

9 Publications



## Basic Information

### Catalog Number:

22802-1-AP

### Size:

150ul, Concentration: 900 ug/ml by Nanodrop and 360 ug/ml by Bradford method using BSA as the standard;

### Source:

Rabbit

### Isotype:

IgG

### Immunogen Catalog Number:

AG18850

### GenBank Accession Number:

BC105016

### GeneID (NCBI):

9973

### UNIPROT ID:

O14618

### Full Name:

copper chaperone for superoxide dismutase

### Calculated MW:

274 aa, 29 kDa

### Observed MW:

34 kDa

### Purification Method:

Antigen affinity purification

### Recommended Dilutions:

WB 1:500-1:2000

IP 0.5-4.0 ug for 1.0-3.0 mg of total protein lysate

IHC 1:50-1:500

IF/ICC 1:200-1:800

## Applications

### Tested Applications:

WB, IHC, IF/ICC, IP, ELISA

### Cited Applications:

WB, IHC

### Species Specificity:

human, mouse

### Cited Species:

human, mouse

**Note-IHC: suggested antigen retrieval with TE buffer pH 9.0; (\*) Alternatively, antigen retrieval may be performed with citrate buffer pH 6.0**

### Positive Controls:

WB : HepG2 cells,

IP : HepG2 cells,

IHC : mouse brain tissue, human prostate cancer tissue

IF/ICC : HepG2 cells,

## Background Information

Copper chaperone for superoxide dismutase (CCS) is a soluble factor that converts copper into copper-zinc superoxide dismutase (SOD1). CCS and SOD1 interact directly in vivo and in vitro, and this interaction is mediated by homologous domains in each protein. CCS not only interacts with wild-type SOD1 but also interacts with SOD1 containing common missense mutations, resulting in FALS.

## Notable Publications

Author	Pubmed ID	Journal	Application
Rashim Pal Singh	32416059	Cell Stem Cell	WB
Sarah E Antinone	28120938	Sci Rep	WB
Nadine Bakkar	33359139	Neurobiol Dis	WB

## Storage

### Storage:

Store at -20°C. Stable for one year after shipment.

### Storage Buffer:

PBS with 0.02% sodium azide and 50% glycerol pH 7.3.

Aliquoting is unnecessary for -20°C storage

\*\*\* 20ul sizes contain 0.1% BSA

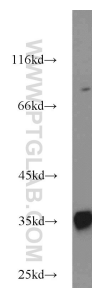
For technical support and original validation data for this product please contact:

T: 1 (888) 4PTGLAB (1-888-478-4522) (toll free in USA), or 1(312) 455-8498 (outside USA)

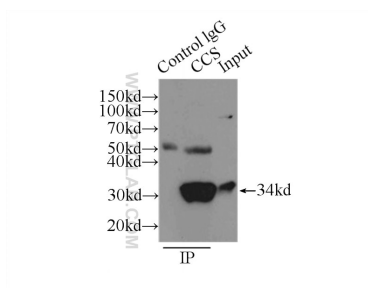
E: [proteintech@ptglab.com](mailto:proteintech@ptglab.com)  
W: [ptglab.com](http://ptglab.com)

This product is exclusively available under Proteintech Group brand and is not available to purchase from any other manufacturer.

## Selected Validation Data



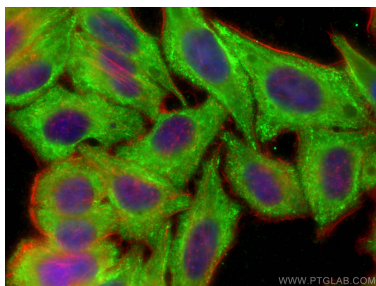
HepG2 cells were subjected to SDS PAGE followed by western blot with 22802-1-AP (CCS antibody) at dilution of 1:1000 incubated at room temperature for 1.5 hours.



IP result of anti-CCS (IP:22802-1-AP, 3ug; Detection:22802-1-AP 1:1000) with HepG2 cells lysate 6000ug.



Immunohistochemical analysis of paraffin-embedded mouse brain tissue slide using 22802-1-AP (CCS antibody) at dilution of 1:200 (under 10x lens). Heat mediated antigen retrieval with Tris-EDTA buffer (pH 9.0).



Immunofluorescent analysis of (-20°C Ethanol) fixed HepG2 cells using CCS antibody (22802-1-AP) at dilution of 1:400 and CoraLite®488-Conjugated Goat Anti-Rabbit IgG(H+L) (SA00013-2), CL594-phalloidin (red).