

For Research Use Only

# PRR14 Polyclonal antibody

Catalog Number: 22819-1-AP **1 Publications**



## Basic Information

|  |  |  |
|--|--|--|
| <b>Catalog Number:</b><br>22819-1-AP   | <b>GenBank Accession Number:</b><br>BC000119 | <b>Purification Method:</b><br>Antigen affinity purification |
| <b>Size:</b><br>150ul , Concentration: 600 µg/ml by Nanodrop and 320 µg/ml by Bradford method using BSA as the standard; | <b>GeneID (NCBI):</b><br>78994               | <b>Recommended Dilutions:</b><br>WB 1:1000-1:4000            |
| <b>Source:</b><br>Rabbit   | <b>Full Name:</b><br>proline rich 14         |  |
| <b>Isotype:</b><br>IgG   | <b>Calculated MW:</b><br>585 aa, 64 kDa      |  |
| <b>Immunogen Catalog Number:</b><br>AG14119  | <b>Observed MW:</b><br>64-70 kDa             |  |

## Applications

|   |  |
|---|--|
| <b>Tested Applications:</b><br>WB, ELISA    | <b>Positive Controls:</b><br>WB : HCT 116 cells, HL-60 cells, MCF-7 cells, SW480 cells |
| <b>Cited Applications:</b><br>IF, WB        |  |
| <b>Species Specificity:</b><br>human, mouse |  |
| <b>Cited Species:</b><br>mouse              |  |

## Background Information

PRR14 (proline-rich protein 14) is a 585-amino acid protein with a calculated molecular weight of 64 kDa. This protein functions to tether heterochromatin to the nuclear periphery during interphase, through associations with heterochromatin protein 1 (HP1) and the nuclear lamina. After disassembly early in mitosis, PRR14 reassembles in two steps, first binding to anaphase chromosomes through HP1, followed by association with the nuclear lamina in telophase. PRR14 may thereby play a role in specifying HP1-bound heterochromatin for reattachment to the nuclear lamina at mitotic exit. (PMID: 24209742; 24637393)

## Notable Publications

| Author          | Pubmed ID | Journal | Application |
|-----------------|-----------|---------|-------------|
| Anna A Kiseleva | 36633363  | Nucleus | WB,IF       |

## Storage

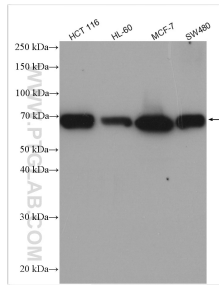
**Storage:**  
Store at -20°C. Stable for one year after shipment.  
**Storage Buffer:**  
PBS with 0.02% sodium azide and 50% glycerol pH 7.3.  
Aliquoting is unnecessary for -20°C storage

\*\*\* 20ul sizes contain 0.1% BSA

For technical support and original validation data for this product please contact:  
T: 1 (888) 4PTGLAB (1-888-478-4522) (toll free in USA), or 1(312) 455-8498 (outside USA)  
E: proteintech@ptglab.com  
W: ptglab.com

This product is exclusively available under Proteintech Group brand and is not available to purchase from any other manufacturer.

## Selected Validation Data



Various lysates were subjected to SDS PAGE followed by western blot with 22819-1-AP (PRR14 antibody) at dilution of 1:2000 incubated at room temperature for 1.5 hours.