

For Research Use Only

# C7orf30 Polyclonal antibody

Catalog Number: 22838-1-AP **5 Publications**



## Basic Information

<b>Catalog Number:</b> 22838-1-AP	<b>GenBank Accession Number:</b> BC012331	<b>Purification Method:</b> Antigen affinity purification
<b>Size:</b> 150ul, Concentration: 650 µg/ml by Nanodrop;	<b>GeneID (NCBI):</b> 115416	<b>Recommended Dilutions:</b> WB 1:1000-1:6000 IHC 1:20-1:200
<b>Source:</b> Rabbit	<b>Full Name:</b> chromosome 7 open reading frame 30	
<b>Isotype:</b> IgG	<b>Calculated MW:</b> 234 aa, 26 kDa	
<b>Immunogen Catalog Number:</b> AG18286	<b>Observed MW:</b> 26-28 kDa	

## Applications

<b>Tested Applications:</b> IHC, WB, ELISA	<b>Positive Controls:</b> WB : HEK-293 cells, HeLa cells, HepG2 cells, K-562 cells, U-251 cells IHC : human testis tissue, human liver tissue
<b>Cited Applications:</b> WB	
<b>Species Specificity:</b> human	
<b>Cited Species:</b> human	

**Note-IHC: suggested antigen retrieval with TE buffer pH 9.0; (\*) Alternatively, antigen retrieval may be performed with citrate buffer pH 6.0**

## Background Information

C7orf30, also known as MALSU1, is a member of the iojap protein family. It was predicted to enable ribosomal large subunit binding activity. It was involved in negative regulation of mitochondrial translation and ribosomal large subunit biogenesis.

## Notable Publications

Author	Pubmed ID	Journal	Application
Hauke S Hillen	34135319	Nat Commun	WB
Ya-Ting Tu	25683708	Cell Rep	WB
Elena Lavdovskaia	30085210	Nucleic Acids Res	WB

## Storage

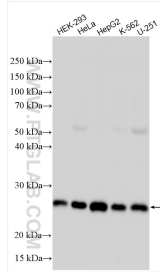
**Storage:**  
Store at -20°C. Stable for one year after shipment.  
**Storage Buffer:**  
PBS with 0.02% sodium azide and 50% glycerol pH 7.3.  
Aliquoting is unnecessary for -20°C storage

\*\*\* 20ul sizes contain 0.1% BSA

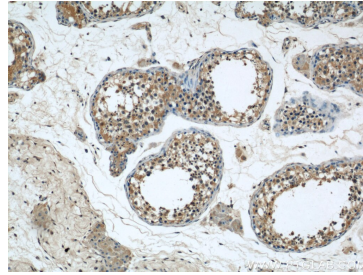
For technical support and original validation data for this product please contact:  
T: 1 (888) 4PTGLAB (1-888-478-4522) (toll free in USA), or 1(312) 455-8498 (outside USA)  
E: proteintech@ptglab.com  
W: ptglab.com

This product is exclusively available under Proteintech Group brand and is not available to purchase from any other manufacturer.

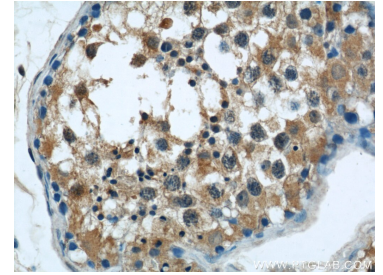
## Selected Validation Data



Various lysates were subjected to SDS PAGE followed by western blot with 22838-1-AP (C7orf30 antibody) at dilution of 1:3000 incubated at room temperature for 1.5 hours.



Immunohistochemical analysis of paraffin-embedded human testis using 22838-1-AP (C7orf30 antibody) at dilution of 1:50 (under 10x lens).



Immunohistochemical analysis of paraffin-embedded human testis using 22838-1-AP (C7orf30 antibody) at dilution of 1:50 (under 40x lens).