

For Research Use Only

MYBPC1 Polyclonal antibody

Catalog Number: 22900-1-AP

3 Publications



Basic Information

Catalog Number:

22900-1-AP

Size:

150ul, Concentration: 500 ug/ml by Nanodrop and 347 ug/ml by Bradford method using BSA as the standard;

Source:

Rabbit

Isotype:

IgG

GenBank Accession Number:

NM_002465

GeneID (NCBI):

4604

UNIPROT ID:

Q00872

Full Name:

myosin binding protein C, slow type

Calculated MW:

128 kDa

Observed MW:

135-140 kDa

Purification Method:

Antigen affinity purification

Recommended Dilutions:

WB 1:500-1:2000

IHC 1:20-1:200

Applications

Tested Applications:

WB, IHC, ELISA

Cited Applications:

WB, IHC

Species Specificity:

human, mouse, rat

Cited Species:

human, rat, mouse

Positive Controls:

WB : mouse skeletal muscle tissue, mouse pancreas tissue

IHC : human skeletal muscle tissue, human bladder tissue, human heart tissue

Note-IHC: suggested antigen retrieval with TE buffer pH 9.0; (*) Alternatively, antigen retrieval may be performed with citrate buffer pH 6.0

Background Information

MYBPC1, also named as MYBPCS, belongs to the immunoglobulin superfamily and MyBP family. It is a thick filament-associated protein located in the crossbridge region of vertebrate striated muscle a bands. In vitro it binds MHC, F-actin and native thin filaments, and modifies the activity of actin-activated myosin ATPase. It may modulate muscle contraction or may play a more structural role. This antibody is specific to MYBPC1.

Notable Publications

Author	Pubmed ID	Journal	Application
Minjie Shen	33863995	Mol Psychiatry	IHC
Mangesh Morey	37401646	Adv Biol (Weinh)	IHC
I O Petrova	30168060	Dokl Biochem Biophys	WB

Storage

Storage:

Store at -20°C. Stable for one year after shipment.

Storage Buffer:

PBS with 0.02% sodium azide and 50% glycerol pH 7.3.

Aliquoting is unnecessary for -20°C storage

*** 20ul sizes contain 0.1% BSA

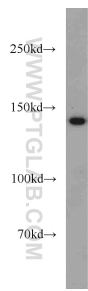
For technical support and original validation data for this product please contact:

T: 1 (888) 4PTGLAB (1-888-478-4522) (toll free in USA), or 1(312) 455-8498 (outside USA)

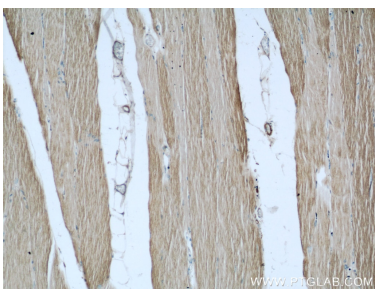
E: proteintech@ptglab.com
W: ptglab.com

This product is exclusively available under Proteintech Group brand and is not available to purchase from any other manufacturer.

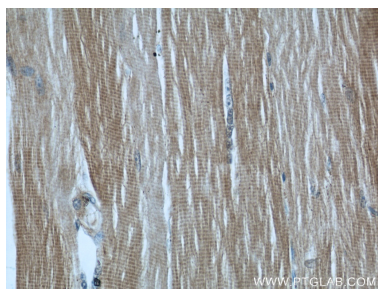
Selected Validation Data



mouse skeletal muscle tissue were subjected to SDS PAGE followed by western blot with 22900-1-AP (MYBPC1 antibody) at dilution of 1:800 incubated at room temperature for 1.5 hours.



Immunohistochemical analysis of paraffin-embedded human skeletal muscle using 22900-1-AP (MYBPC1 antibody) at dilution of 1:50 (under 10x lens).



Immunohistochemical analysis of paraffin-embedded human skeletal muscle using 22900-1-AP (MYBPC1 antibody) at dilution of 1:50 (under 40x lens).