

For Research Use Only

# SHE Polyclonal antibody

Catalog Number: 22902-1-AP



## Basic Information

<b>Catalog Number:</b> 22902-1-AP	<b>GenBank Accession Number:</b> NM_001010846	<b>Purification Method:</b> Antigen Affinity purified
<b>Size:</b> 150ul , Concentration: 400 µg/ml by Nanodrop and 187 µg/ml by Bradford method using BSA as the standard;	<b>GeneID (NCBI):</b> 126669	<b>Recommended Dilutions:</b> WB 1:200-1:1000 IHC 1:50-1:500 IF 1:10-1:100
<b>Source:</b> Rabbit	<b>Full Name:</b> Src homology 2 domain containing E	
<b>Isotype:</b> IgG	<b>Calculated MW:</b> 54 kDa	
	<b>Observed MW:</b> 55 kDa	

## Applications

**Tested Applications:**  
IF, IHC, WB, ELISA

**Species Specificity:**  
human, mouse

**Note-IHC: suggested antigen retrieval with TE buffer pH 9.0; (\*) Alternatively, antigen retrieval may be performed with citrate buffer pH 6.0**

**Positive Controls:**

**WB:** mouse testis tissue,  
**IHC:** human breast cancer tissue,  
**IF:** HepG2 cells,

## Background Information

SHE, also known as SH2 domain-containing adapter protein E, is a 495 amino acid protein whose molecular weight is 54 kDa. The function of SHE remains unknown. This antibody specifically recognises the 54 kDa protein.

## Storage

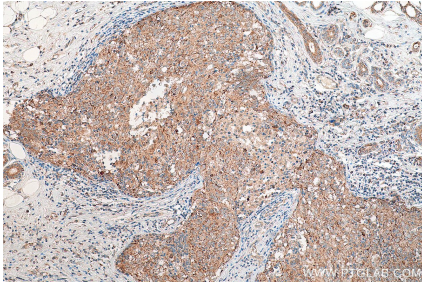
**Storage:**  
Store at -20°C. Stable for one year after shipment.  
**Storage Buffer:**  
PBS with 0.02% sodium azide and 50% glycerol pH 7.3.  
Aliquoting is unnecessary for -20°C storage

\*\*\* 20ul sizes contain 0.1% BSA

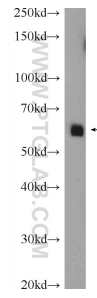
For technical support and original validation data for this product please contact:  
T: 1 (888) 4PTGLAB (1-888-478-4522) (toll free in USA), or 1(312) 455-8498 (outside USA)  
E: proteintech@ptglab.com  
W: ptglab.com

This product is exclusively available under Proteintech Group brand and is not available to purchase from any other manufacturer.

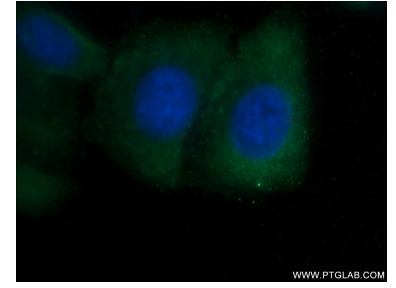
## Selected Validation Data



Immunohistochemical analysis of paraffin-embedded human breast cancer tissue slide using 22902-1-AP (SHE antibody) at dilution of 1:200 (under 10x lens). Heat mediated antigen retrieval with Tris-EDTA buffer (pH 9.0).



mouse testis tissue were subjected to SDS PAGE followed by western blot with 22902-1-AP (SHE Antibody) at dilution of 1:300 incubated at room temperature for 1.5 hours.



Immunofluorescent analysis of HepG2 cells using 22902-1-AP (SHE antibody) at dilution of 1:25 and Alexa Fluor 488-conjugated AffiniPure Goat Anti-Rabbit IgG(H+L).