

Nav1.5

Polyclonal ANTIBODY

Catalog Number: 23016-1-AP

Basic Information

Catalog Number: 23016-1-AP	GenBank Accession Number: BC140813	Recommended Dilutions: WB 1:500-1:1000
Size: 90 µg/150 µl	GeneID (NCBI): 6331	
Source: Rabbit	Full Name: sodium channel, voltage-gated, type V, alpha subunit	
Isotype: IgG	Calculated MW: 2016aa, 227 kDa	
Purification Method: Antigen affinity purification	Observed MW: 227 kDa	
Immunogen Catalog Number: AG19275		

Applications

Tested Applications: ELISA, WB	Positive Controls: WB : mouse heart tissue;
Species Specificity: human, mouse	

Background Information

Voltage-gated sodium channels are responsible for initiation and propagation of action potentials in the membranes of neurons and most electrically excitable cells (PMD: 10798388). These channels are composed of a large alpha subunit that forms the ion conduction pore and auxiliary beta subunits (PMD: 11486343). The alpha subunits form a gene family with at least 10 members. Nav1.5, encoded by the SCN5A gene in humans, is a pore forming alpha subunit of voltage-gated sodium channels. Nav1.5 is the principal Na⁺ channel isoform expressed in cardiomyocytes. Mutations in SCN5A gene have been linked to many cardiac electrical disorders, including the congenital and acquired long QT syndrome, Brugada syndrome, conduction slowing, sick sinus syndrome, atrial fibrillation, and dilated cardiomyopathy (PMD: 23123192).

Notable Publications

Author	Pubmed ID	Journal	Application
--------	-----------	---------	-------------

Storage

Storage:
Store at -20°C. Stable for one year after shipment.
Storage Buffer:
PBS with 0.02% sodium azide and 50% glycerol pH 7.3.
 Aliquoting is unnecessary for -20°C storage

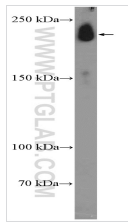
For technical support and original validation data for this product please contact:

T: 1 (888) 4PTGLAB (1-888-478-4522) (toll free in USA), or 1(312) 455-8498 (outside USA)

E: proteintech@ptglab.com
 W: ptglab.com

This product is exclusively available under Proteintech Group brand and is not available to purchase from any other manufacturer.

Selected Validation Data



mouse heart tissue were subjected to SDS PAGE followed by western blot with 23016-1-AP Nav 1.5 antibody at dilution of 1:600 incubated at room temperature for 1.5 hours