

PGLYRP2 Polyclonal antibody

Catalog Number: 23029-1-AP

Basic Information

Catalog Number:

23029-1-AP

Size:

150ul, Concentration: 300 µg/ml by Nanodrop and 180 µg/ml by Bradford method using BSA as the standard;

Source:

Rabbit

Isotype:

IgG

Immunogen Catalog Number:

AG19336

GenBank Accession Number:

BC136551

GeneID (NCBI):

114770

Full Name:

peptidoglycan recognition protein 2

Calculated MW:

576 aa, 62 kDa

Observed MW:

68 kDa

Purification Method:

Antigen Affinity purified

Recommended Dilutions:

WB 1:500-1:2000

IP 0.5-4.0 µg for IP and 1:500-1:2000

for WB

IHC 1:20-1:200

Applications

Tested Applications:

IHC, IP, WB, ELISA

Species Specificity:

human

Note-IHC: suggested antigen retrieval with TE buffer pH 9.0; (*) Alternatively, antigen retrieval may be performed with citrate buffer pH 6.0

Positive Controls:

WB: human plasma tissue,

IP: human plasma tissue,

IHC: human liver cancer tissue,

Background Information

Peptidoglycan recognition protein 2 (PGLYRP2) is an N-acetylmuramoyl-L-alanine amidase that hydrolyzes peptidoglycan, a ubiquitous component of bacterial cell walls (PMID: 14506276). It is involved in innate immunity. PGLYRP2 is primarily expressed in liver and secreted into blood (PMID: 11461926). The apparent molecular mass measured by SDS-PAGE is larger than calculated mass of 62 kDa, which is likely due to N-glycosylation (PMID: 16054449).

Storage

Storage:

Store at -20°C. Stable for one year after shipment.

Storage Buffer:

PBS with 0.02% sodium azide and 50% glycerol pH 7.3.

Aliquoting is unnecessary for -20°C storage

*** 20ul sizes contain 0.1% BSA

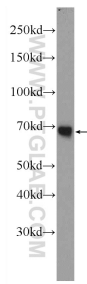
For technical support and original validation data for this product please contact:

T: 1 (888) 4PTGLAB (1-888-478-4522) (toll free in USA), or 1(312) 455-8498 (outside USA)

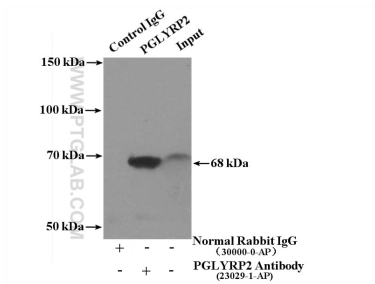
E: proteintech@ptglab.com
W: ptglab.com

This product is exclusively available under Proteintech Group brand and is not available to purchase from any other manufacturer.

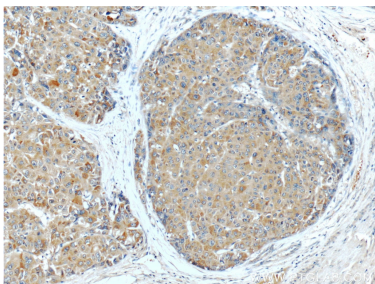
Selected Validation Data



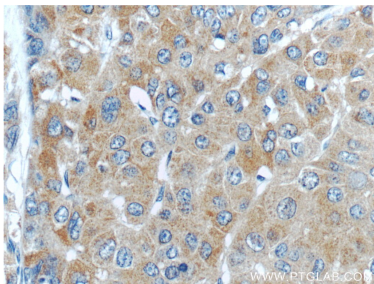
human plasma were subjected to SDS PAGE followed by western blot with 23029-1-AP (PGLYRP2 Antibody) at dilution of 1:1000 incubated at room temperature for 1.5 hours.



IP Result of anti-PGLYRP2 (IP:23029-1-AP, 4ug; Detection:23029-1-AP 1:1000) with human plasma lysate 4000ug.



Immunohistochemical analysis of paraffin-embedded human liver cancer tissue slide using 23029-1-AP (PGLYRP2 Antibody) at dilution of 1:50 (under 10x lens).



Immunohistochemical analysis of paraffin-embedded human liver cancer tissue slide using 23029-1-AP (PGLYRP2 Antibody) at dilution of 1:50 (under 40x lens).