

For Research Use Only

SALL2 Polyclonal antibody

Catalog Number: 23114-1-AP



Basic Information

Catalog Number: 23114-1-AP	GenBank Accession Number: BC136528	Purification Method: Antigen Affinity purified
Size: 150ul , Concentration: 1000 µg/ml by Nanodrop and 573 µg/ml by Bradford method using BSA as the standard;	GeneID (NCBI): 6297	Recommended Dilutions: WB 1:500-1:2000
Source: Rabbit	Full Name: sal-like 2 (Drosophila)	
Isotype: IgG	Calculated MW: 1007 aa, 105 kDa	
Immunogen Catalog Number: AG19427	Observed MW: 130 kDa	

Applications

Tested Applications: WB, ELISA	Positive Controls: WB : Jurkat cells, HEK-293 cells
Species Specificity: human	

Background Information

Sall2 (SALL2, sal-like 2, HSAL2, p150(Sal2)) are mammalian homologs of the Drosophila region-specific home-otic gene spalt (sal), which encodes a zinc finger-containing transcription regulator. Mammalian Sall1 may mediate higher order chromatin structure and may be a component of a distinct heterochromatin-dependent silencing process. Sall2 is a p53-independent regulator of p21 and BAX, and can function in some cell types as a regulator of cell growth and survival. Human Sall2 is present in brain, heart, kidney and pancreas. This antibody is specific to the SALL2 protein.

Storage

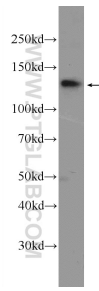
Storage:
Store at -20°C. Stable for one year after shipment.
Storage Buffer:
PBS with 0.02% sodium azide and 50% glycerol pH 7.3.
Aliquoting is unnecessary for -20°C storage

*** 20ul sizes contain 0.1% BSA

For technical support and original validation data for this product please contact:
T: 1 (888) 4PTGLAB (1-888-478-4522) (toll free in USA), or 1(312) 455-8498 (outside USA) E: proteintech@ptglab.com
W: ptglab.com

This product is exclusively available under Proteintech Group brand and is not available to purchase from any other manufacturer.

Selected Validation Data



Jurkat cells were subjected to SDS PAGE followed by western blot with 23114-1-AP (SALL2 Antibody) at dilution of 1:1000 incubated at room temperature for 1.5 hours.