

For Research Use Only

ESRP2 Polyclonal antibody

Catalog Number: 23117-1-AP

1 Publications



Basic Information

Catalog Number:

23117-1-AP

Size:

150ul , Concentration: 300 ug/ml by Nanodrop and 207 ug/ml by Bradford method using BSA as the standard;

Source:

Rabbit

Isotype:

IgG

Immunogen Catalog Number:

AG19436

GenBank Accession Number:

BC030146

GeneID (NCBI):

80004

UNIPROT ID:

Q9H6T0

Full Name:

epithelial splicing regulatory protein

2

Calculated MW:

727 aa, 78 kDa

Observed MW:

78 kDa

Purification Method:

Antigen affinity purification

Recommended Dilutions:

WB 1:200-1:1000

IHC 1:50-1:500

Applications

Tested Applications:

WB, IHC, ELISA

Species Specificity:

human, mouse

Cited Species:

human

Positive Controls:

WB : A431 cells, HeLa cells, HepG2 cells

IHC : human breast cancer tissue,

Note-IHC: suggested antigen retrieval with TE buffer pH 9.0; (*) Alternatively, antigen retrieval may be performed with citrate buffer pH 6.0

Background Information

ESRP2 (Epithelial Splicing Regulatory Protein 2), also known as RBM35B(RNA binding motif protein 35B), is a member of the heterogeneous nuclear ribonucleoprotein (hnRNP) family of RNA binding proteins. ESRP2 plays a role in the regulation of alternative splicing events of pre-mRNAs(PMID: 27401076). Overexpression of ESRP2 has been described in various malignant tumors, such as pancreatic ductal adenocarcinoma, oral squamous carcinoma, ovarian cancer, and luminal-type breast cancer(PMID: 33339518).

Notable Publications

Author	Pubmed ID	Journal	Application
Kalpit Shah	32820253	Oncogene	

Storage

Storage:

Store at -20°C. Stable for one year after shipment.

Storage Buffer:

PBS with 0.02% sodium azide and 50% glycerol pH 7.3.

Aliquoting is unnecessary for -20°C storage

*** 20ul sizes contain 0.1% BSA

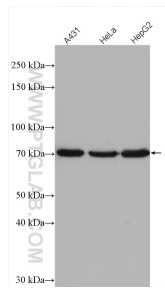
For technical support and original validation data for this product please contact:

T: 1 (888) 4PTGLAB (1-888-478-4522) (toll free in USA), or 1(312) 455-8498 (outside USA)

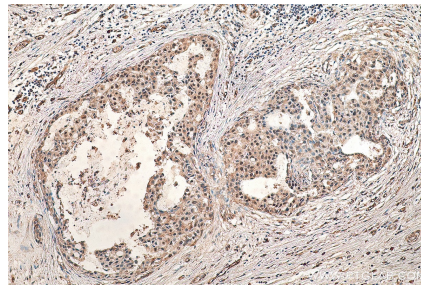
E: proteintech@ptglab.com
W: ptglab.com

This product is exclusively available under Proteintech Group brand and is not available to purchase from any other manufacturer.

Selected Validation Data



Various lysates were subjected to SDS PAGE followed by western blot with 23117-1-AP (ESRP2 antibody) at dilution of 1:300 incubated at room temperature for 1.5 hours.



Immunohistochemical analysis of paraffin-embedded human breast cancer tissue slide using 23117-1-AP (ESRP2 antibody) at dilution of 1:200 (under 10x lens). Heat mediated antigen retrieval with Tris-EDTA buffer (pH 9.0).