

For Research Use Only

# CADM4 Polyclonal antibody

Catalog Number: 23136-1-AP



## Basic Information

**Catalog Number:**

23136-1-AP

**Size:**

150ul , Concentration: 500 ug/ml by Nanodrop and 360 ug/ml by Bradford method using BSA as the standard;

**Source:**

Rabbit

**Isotype:**

IgG

**Immunogen Catalog Number:**

AG18922

**GenBank Accession Number:**

BC141627

**GeneID (NCBI):**

199731

**UNIPROT ID:**

Q8NFZ8

**Full Name:**

cell adhesion molecule 4

**Calculated MW:**

388 aa, 43 kDa

**Observed MW:**

65-70 kDa

**Purification Method:**

Antigen affinity purification

**Recommended Dilutions:**

WB 1:500-1:2000

## Applications

**Tested Applications:**

WB, ELISA

**Species Specificity:**

human, mouse, rat

**Positive Controls:**

WB : RAW 264.7 cells, RAW264.7 cells

## Background Information

CADM4, also known as IGSF4C or TSL2, is a cell adhesion molecule belonging to the immunoglobulin superfamily. CADM4 has been shown to serve as a tumor suppressor.

## Storage

**Storage:**

Store at -20°C. Stable for one year after shipment.

**Storage Buffer:**

PBS with 0.02% sodium azide and 50% glycerol pH 7.3.

Aliquoting is unnecessary for -20°C storage

\*\*\* 20ul sizes contain 0.1% BSA

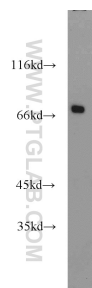
For technical support and original validation data for this product please contact:

T: 1 (888) 4PTGLAB (1-888-478-4522) (toll free in USA), or 1(312) 455-8498 (outside USA)

E: [proteintech@ptglab.com](mailto:proteintech@ptglab.com)  
W: [ptglab.com](http://ptglab.com)

This product is exclusively available under Proteintech Group brand and is not available to purchase from any other manufacturer.

## Selected Validation Data



RAW264.7 cells were subjected to SDS PAGE followed by western blot with 23136-1-AP (CADM4 antibody) at dilution of 1:1000 incubated at room temperature for 1.5 hours.