

For Research Use Only

# TMEM127 Polyclonal antibody

Catalog Number: 23142-1-AP

2 Publications



## Basic Information

### Catalog Number:

23142-1-AP

### Size:

150ul, Concentration: 850 ug/ml by Nanodrop and 467 ug/ml by Bradford method using BSA as the standard;

### Source:

Rabbit

### Isotype:

IgG

### Immunogen Catalog Number:

AG19472

### GenBank Accession Number:

BC039892

### GeneID (NCBI):

55654

### UNIPROT ID:

O75204

### Full Name:

transmembrane protein 127

### Calculated MW:

238 aa, 26 kDa

### Observed MW:

26 kDa

### Purification Method:

Antigen Affinity purified

### Recommended Dilutions:

IP 0.5-4.0 ug for 1.0-3.0 mg of total protein lysate

IHC 1:250-1:1000

IF/ICC 1:200-1:800

## Applications

### Tested Applications:

IHC, IF/ICC, IP, ELISA

### Cited Applications:

WB

### Species Specificity:

human, mouse

### Cited Species:

human, mouse

**Note-IHC: suggested antigen retrieval with TE buffer pH 9.0; (\*) Alternatively, antigen retrieval may be performed with citrate buffer pH 6.0**

### Positive Controls:

IP: HeLa cells,

IHC: human stomach cancer tissue, human heart tissue, human liver cancer tissue

IF/ICC: NIH/3T3 cells,

## Notable Publications

Author	Pubmed ID	Journal	Application
Xiaoyan Hao	39388928	Tissue Cell	WB
Chaojun Yan	37589705	Elife	WB

## Storage

### Storage:

Store at -20°C. Stable for one year after shipment.

### Storage Buffer:

PBS with 0.02% sodium azide and 50% glycerol pH 7.3.

Aliquoting is unnecessary for -20°C storage

\*\*\* 20ul sizes contain 0.1% BSA

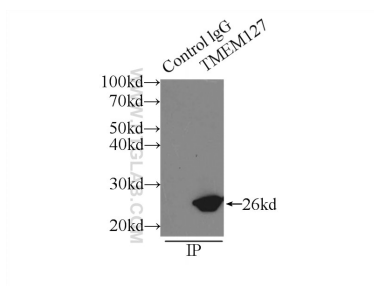
For technical support and original validation data for this product please contact:

T: 1 (888) 4PTGLAB (1-888-478-4522) (toll free in USA), or 1(312) 455-8498 (outside USA)

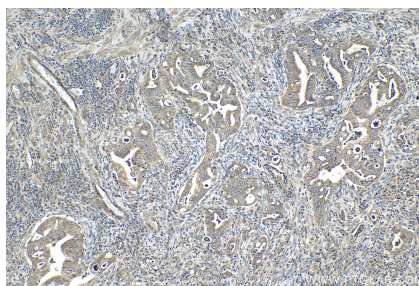
E: [proteintech@ptglab.com](mailto:proteintech@ptglab.com)  
W: [ptglab.com](http://ptglab.com)

This product is exclusively available under Proteintech Group brand and is not available to purchase from any other manufacturer.

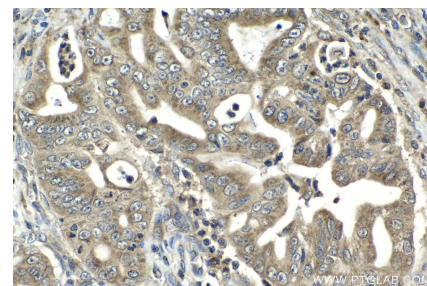
## Selected Validation Data



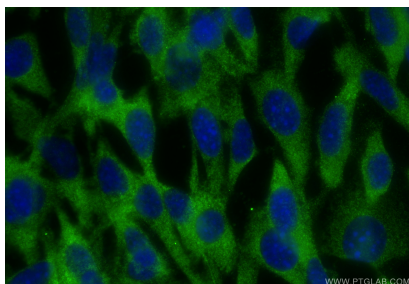
IP result of anti-TMEM127 (IP:23142-1-AP, 3ug; Detection:23142-1-AP 1:500) with HeLa cells lysate 3000ug.



Immunohistochemical analysis of paraffin-embedded human stomach cancer tissue slide using 23142-1-AP (TMEM127 antibody) at dilution of 1:500 (under 10x lens). Heat mediated antigen retrieval with Tris-EDTA buffer (pH 9.0).



Immunohistochemical analysis of paraffin-embedded human stomach cancer tissue slide using 23142-1-AP (TMEM127 antibody) at dilution of 1:500 (under 40x lens). Heat mediated antigen retrieval with Tris-EDTA buffer (pH 9.0).



Immunofluorescent analysis of (-20°C Ethanol) fixed NIH/3T3 cells using TMEM127 antibody (23142-1-AP) at dilution of 1:400 and CoraLite®488-Conjugated Goat Anti-Rabbit IgG(H+L) (SA00013-2).