

For Research Use Only

MGME1 Polyclonal antibody

Catalog Number: 23178-1-AP

Featured Product

5 Publications



Basic Information

Catalog Number:

23178-1-AP

Size:

150ul, Concentration: 750 ug/ml by Nanodrop and 460 ug/ml by Bradford method using BSA as the standard;

Source:

Rabbit

Isotype:

IgG

Immunogen Catalog Number:

AG19644

GenBank Accession Number:

BC016869

GeneID (NCBI):

92667

UNIPROT ID:

Q9BQP7

Full Name:

chromosome 20 open reading frame 72

Calculated MW:

344 aa, 39 kDa

Observed MW:

36-39 kDa

Purification Method:

Antigen affinity purification

Recommended Dilutions:

WB 1:500-1:2000

IHC 1:20-1:200

Applications

Tested Applications:

WB, IHC, ELISA

Cited Applications:

WB, IF, IP

Species Specificity:

human, mouse

Cited Species:

human, mouse

Positive Controls:

WB : Jurkat cells, A549 cells, HEK-293 cells, HepG2 cells, mouse liver tissue, Y79 cells

IHC : human kidney tissue, human liver cancer tissue

Note-IHC: suggested antigen retrieval with TE buffer pH 9.0; (*) Alternatively, antigen retrieval may be performed with citrate buffer pH 6.0

Background Information

MGME1, also named as C20orf72, is a single-stranded DNA (ssDNA) exonuclease involved in mitochondrial genome maintenance. It has preference for 5'-3' exonuclease activity. MGME1 cleaves single-stranded DNA (ssDNA) and several DNA or DNA-RNA chimeric oligonucleotides that showed free nucleic acid ends. It probably involved in mitochondrial DNA (mtDNA) repair, possibly via the processing of displaced DNA containing Okazaki fragments during RNA-primed DNA synthesis on the lagging strand or via processing of DNA flaps during long-patch base excision repair. This antibody detects the 35-40 kDa protein.

Notable Publications

Author	Pubmed ID	Journal	Application
Jianli Tang	36106732	mBio	IF,IP
Hongxu Xian	35835107	Immunity	WB
Yi Fu	39463974	bioRxiv	WB

Storage

Storage:

Store at -20°C. Stable for one year after shipment.

Storage Buffer:

PBS with 0.02% sodium azide and 50% glycerol pH 7.3.

Aliquoting is unnecessary for -20°C storage

*** 20ul sizes contain 0.1% BSA

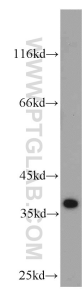
For technical support and original validation data for this product please contact:

T: 1 (888) 4PTGLAB (1-888-478-4522) (toll free in USA), or 1(312) 455-8498 (outside USA)

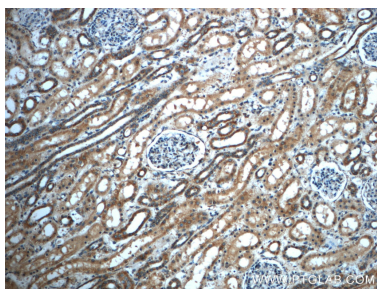
E: proteintech@ptglab.com
W: ptglab.com

This product is exclusively available under Proteintech Group brand and is not available to purchase from any other manufacturer.

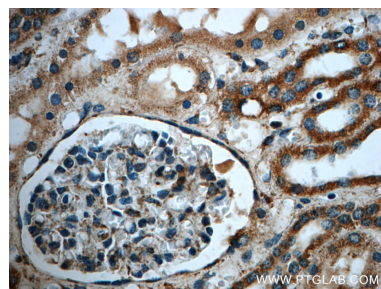
Selected Validation Data



Jurkat cells were subjected to SDS PAGE followed by western blot with 23178-1-AP (MGME1 antibody) at dilution of 1:1000 incubated at room temperature for 1.5 hours.



Immunohistochemical analysis of paraffin-embedded human kidney slide using 23178-1-AP (MGME1 Antibody) at dilution of 1:50 (under 10x lens).



Immunohistochemical analysis of paraffin-embedded human kidney slide using 23178-1-AP (MGME1 Antibody) at dilution of 1:50 (under 40x lens).