

For Research Use Only

EVI1 Polyclonal antibody

Catalog Number: 23201-1-AP

2 Publications



Basic Information

Catalog Number:

23201-1-AP

Size:

150ul, Concentration: 550 ug/ml by Nanodrop and 273 ug/ml by Bradford method using BSA as the standard;

Source:

Rabbit

Isotype:

IgG

Immunogen Catalog Number:

AG19603

GenBank Accession Number:

BC130520

GeneID (NCBI):

2122

UNIPROT ID:

Q03112

Full Name:

ecotropic viral integration site 1

Calculated MW:

1239 aa, 139 kDa

Observed MW:

118 kDa

Purification Method:

Antigen Affinity purified

Recommended Dilutions:

WB 1:200-1:1000

IHC 1:250-1:1000

IF/ICC 1:50-1:500

Applications

Tested Applications:

WB, IHC, IF/ICC, ELISA

Cited Applications:

WB, ColP, IF

Species Specificity:

human

Cited Species:

human

Note-IHC: suggested antigen retrieval with TE buffer pH 9.0; (*) Alternatively, antigen retrieval may be performed with citrate buffer pH 6.0

Positive Controls:

WB : SKOV-3 cells,

IHC : human urothelial carcinoma tissue, human thyroid cancer tissue

IF/ICC : SKOV-3 cells,

Notable Publications

Author	Pubmed ID	Journal	Application
Jessica Reddy	34818047	Sci Adv	WB,IF
Zhitao Chen	37732539	Oncol Rep	ColP

Storage

Storage:

Store at -20°C. Stable for one year after shipment.

Storage Buffer:

PBS with 0.02% sodium azide and 50% glycerol pH 7.3.

Aliquoting is unnecessary for -20°C storage

*** 20ul sizes contain 0.1% BSA

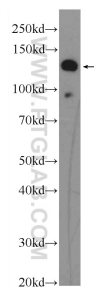
For technical support and original validation data for this product please contact:

T: 1 (888) 4PTGLAB (1-888-478-4522) (toll free in USA), or 1(312) 455-8498 (outside USA)

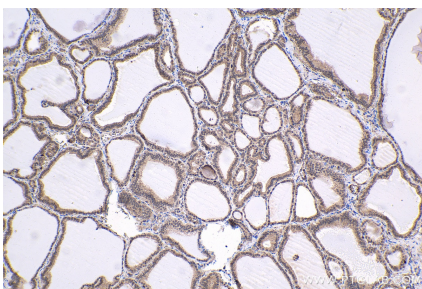
E: proteintech@ptglab.com
W: ptglab.com

This product is exclusively available under Proteintech Group brand and is not available to purchase from any other manufacturer.

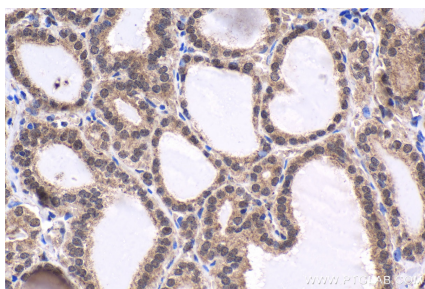
Selected Validation Data



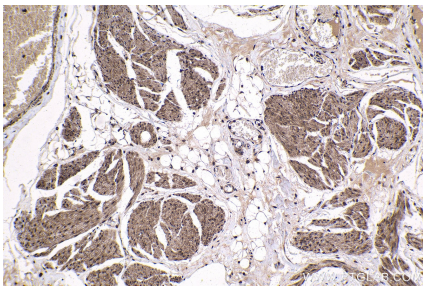
SKOV-3 cells were subjected to SDS PAGE followed by western blot with 23201-1-AP (EVI1 Antibody) at dilution of 1:300 incubated at room temperature for 1.5 hours.



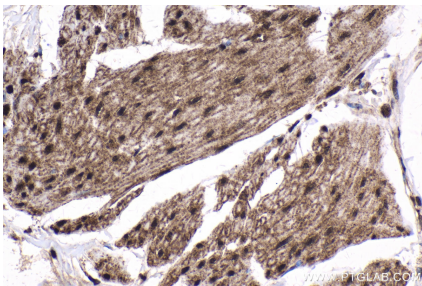
Immunohistochemical analysis of paraffin-embedded human thyroid cancer tissue slide using 23201-1-AP (EVI1 antibody) at dilution of 1:500 (under 10x lens). Heat mediated antigen retrieval with Tris-EDTA buffer (pH 9.0).



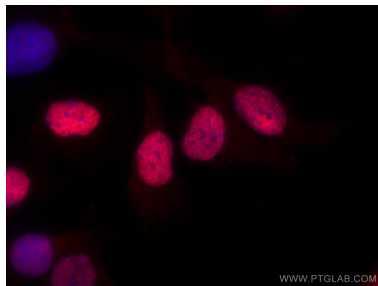
Immunohistochemical analysis of paraffin-embedded human thyroid cancer tissue slide using 23201-1-AP (EVI1 antibody) at dilution of 1:500 (under 40x lens). Heat mediated antigen retrieval with Tris-EDTA buffer (pH 9.0).



Immunohistochemical analysis of paraffin-embedded human urothelial carcinoma tissue slide using 23201-1-AP (EVI1 antibody) at dilution of 1:500 (under 10x lens). Heat mediated antigen retrieval with Tris-EDTA buffer (pH 9.0).



Immunohistochemical analysis of paraffin-embedded human urothelial carcinoma tissue slide using 23201-1-AP (EVI1 antibody) at dilution of 1:500 (under 40x lens). Heat mediated antigen retrieval with Tris-EDTA buffer (pH 9.0).



Immunofluorescent analysis of (4% PFA) fixed SKOV-3 cells using EVI1 antibody (23201-1-AP) at dilution of 1:200 and CoraLite®594-Conjugated Goat Anti-Rabbit IgG(H+L).