

For Research Use Only

IDH2 Polyclonal antibody

Catalog Number: 23254-1-AP

2 Publications



Basic Information

Catalog Number:

23254-1-AP

Size:

150ul, Concentration: 850 ug/ml by Nanodrop and 473 ug/ml by Bradford method using BSA as the standard;

Source:

Rabbit

Isotype:

IgG

Immunogen Catalog Number:

AG19748

GenBank Accession Number:

BC009244

GeneID (NCBI):

3418

UNIPROT ID:

P48735

Full Name:

isocitrate dehydrogenase 2 (NADP+), mitochondrial

Calculated MW:

452 aa, 51 kDa

Observed MW:

41-47 kDa

Purification Method:

Antigen affinity purification

Recommended Dilutions:

WB 1:500-1:3000

IHC 1:20-1:200

IF/ICC 1:20-1:200

Applications

Tested Applications:

WB, IHC, IF/ICC, ELISA

Cited Applications:

WB, IF

Species Specificity:

human, mouse, rat

Cited Species:

human, mouse

Note-IHC: suggested antigen retrieval with TE buffer pH 9.0; (*) Alternatively, antigen retrieval may be performed with citrate buffer pH 6.0

Positive Controls:

WB : HEK-293 cells, mouse kidney tissue, mouse liver tissue, rat kidney tissue, rat liver tissue, DU 145 cells, Jurkat cells, mouse brain tissue

IHC : human heart tissue,

IF/ICC : HepG2 cells,

Background Information

IDH2, also named as IDP and ICD-M, belongs to the isocitrate and isopropylmalate dehydrogenases family. It plays a role in intermediary metabolism and energy production. IDH2 is a mitochondrial NADP-dependent isocitrate dehydrogenase that catalyzes oxidative decarboxylation of isocitrate to alpha-ketoglutarate, producing NADPH. It may tightly associate or interact with the pyruvate dehydrogenase complex. IDH1 and IDH2 mutations could also contribute to tumorigenesis and cancer progression through increased mutagenesis. IDH2 has 2 isoforms with the MW of 51 kDa and 45 kDa, and the mature form is about 47 kDa and 41 kDa with the N-terminal transit peptide cleaved. This antibody is specific to IDH2.

Notable Publications

Author	Pubmed ID	Journal	Application
Shubhi Srivastava	37468519	Nat Commun	WB, IF
Pamela Sara E Head	35613279	Sci Transl Med	WB

Storage

Storage:

Store at -20°C. Stable for one year after shipment.

Storage Buffer:

PBS with 0.02% sodium azide and 50% glycerol pH 7.3.

Aliquoting is unnecessary for -20°C storage

*** 20ul sizes contain 0.1% BSA

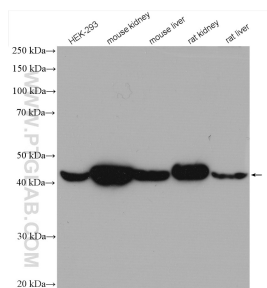
For technical support and original validation data for this product please contact:

T: 1 (888) 4PTGLAB (1-888-478-4522) (toll free in USA), or 1(312) 455-8498 (outside USA)

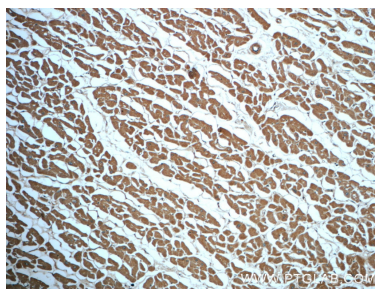
E: proteintech@ptglab.com
W: ptglab.com

This product is exclusively available under Proteintech Group brand and is not available to purchase from any other manufacturer.

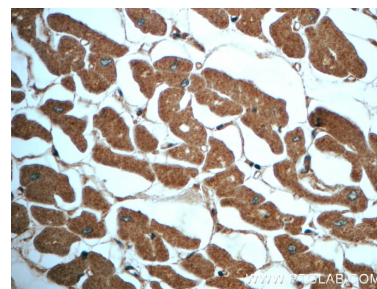
Selected Validation Data



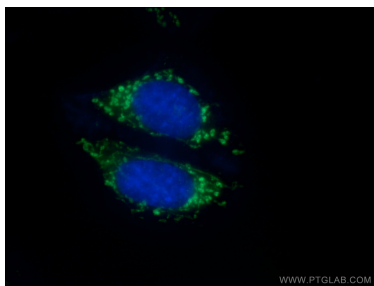
Various lysates were subjected to SDS PAGE followed by western blot with 23254-1-AP (IDH2 antibody) at dilution of 1:1500 incubated at room temperature for 1.5 hours.



Immunohistochemical analysis of paraffin-embedded human heart slide using 23254-1-AP (IDH2 Antibody) at dilution of 1:50.



Immunohistochemical analysis of paraffin-embedded human heart slide using 23254-1-AP (IDH2 Antibody) at dilution of 1:50.



Immunofluorescent analysis of (10% Formaldehyde) fixed HepG2 cells using 23254-1-AP (IDH2 antibody) at dilution of 1:50 and Alexa Fluor 488-conjugated AffiniPure Goat Anti-Rabbit IgG(H+L).