

For Research Use Only

Eg5 Polyclonal antibody

Catalog Number: 23333-1-AP

Featured Product

23 Publications



Basic Information

Catalog Number:

23333-1-AP

Size:

150ul, Concentration: 400 ug/ml by Nanodrop and 233 ug/ml by Bradford method using BSA as the standard;

Source:

Rabbit

Isotype:

IgG

Immunogen Catalog Number:

AG18695

GenBank Accession Number:

BC136474

GeneID (NCBI):

3832

UNIPROT ID:

P52732

Full Name:

kinesin family member 11

Calculated MW:

1056 aa, 119 kDa

Observed MW:

120-130 kDa

Purification Method:

Antigen Affinity purified

Recommended Dilutions:

WB 1:1000-1:4000

IP 0.5-4.0 ug for 1.0-3.0 mg of total protein lysate

IHC 1:200-1:800

IF/ICC 1:200-1:800

Applications

Tested Applications:

WB, IHC, IF/ICC, IP, ELISA

Cited Applications:

WB, IHC, IF

Species Specificity:

human

Cited Species:

human, mouse

Positive Controls:

WB: HEK-293 cells, HeLa cells, Jurkat cells, K-562 cells, Raji cells

IP: Raji cells,

IHC: human lung cancer tissue, human endometrial cancer tissue, human prostate hyperplasia tissue

IF/ICC: HepG2 cells,

Note-IHC: suggested antigen retrieval with TE buffer pH 9.0; (*) Alternatively, antigen retrieval may be performed with citrate buffer pH 6.0

Background Information

Eg5 is a plus-end-directed microtubule motor encoded by KIF11 gene. It is an essential mitotic kinesin that plays a pivotal role in the formation and maintenance of bipolar spindle during early prometaphase. Eg5 has been implicated in tumorigenesis, and its overexpression has been found in various cancer tissues.

Notable Publications

Author	Pubmed ID	Journal	Application
Yuanyuan Shi	36123339	Cell Death Dis	WB, IHC
Xie Mengyan	36176446	Front Pharmacol	WB
Xishan Li	32509165	Am J Transl Res	WB

Storage

Storage:

Store at -20°C. Stable for one year after shipment.

Storage Buffer:

PBS with 0.02% sodium azide and 50% glycerol pH 7.3.

Aliquoting is unnecessary for -20°C storage

*** 20ul sizes contain 0.1% BSA

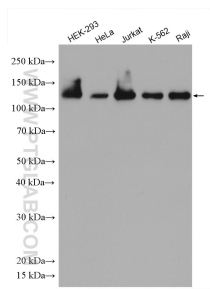
For technical support and original validation data for this product please contact:

T: 1 (888) 4PTGLAB (1-888-478-4522) (toll free in USA), or 1(312) 455-8498 (outside USA)

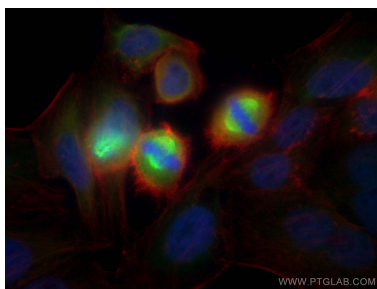
E: proteintech@ptglab.com
W: ptglab.com

This product is exclusively available under Proteintech Group brand and is not available to purchase from any other manufacturer.

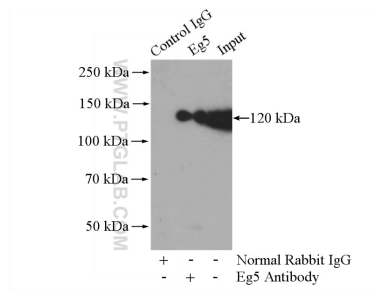
Selected Validation Data



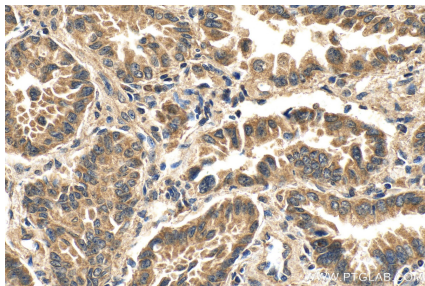
Various lysates were subjected to SDS PAGE followed by western blot with 23333-1-AP (Eg5 antibody) at dilution of 1:4000 incubated at room temperature for 1.5 hours.



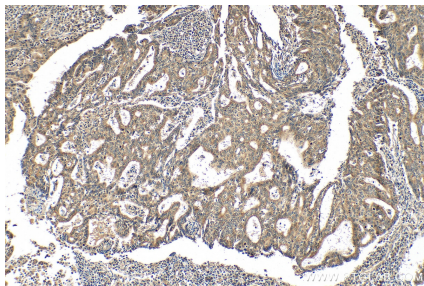
Immunofluorescent analysis of (4% PFA) fixed HepG2 cells using Eg5 antibody (23333-1-AP) at dilution of 1:400 and CoraLite®488-Conjugated Goat Anti-Rabbit IgG(H+L), CL594-phalloidin (red).



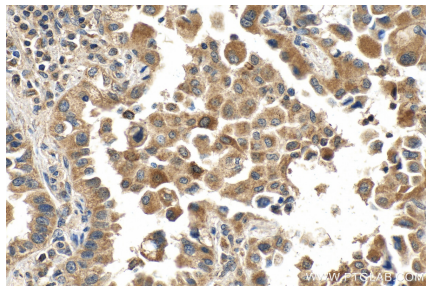
IP result of anti-Eg5 (IP:23333-1-AP, 4ug; Detection:23333-1-AP 1:1000) with Raji cells lysate 2000ug.



Immunohistochemical analysis of paraffin-embedded human lung cancer tissue slide using 23333-1-AP (Eg5 antibody) at dilution of 1:400 (under 40x lens). Heat mediated antigen retrieval with Tris-EDTA buffer (pH 9.0).



Immunohistochemical analysis of paraffin-embedded human endometrial cancer tissue slide using 23333-1-AP (Eg5 antibody) at dilution of 1:400 (under 10x lens). Heat mediated antigen retrieval with Tris-EDTA buffer (pH 9.0).



Immunohistochemical analysis of paraffin-embedded human lung cancer tissue slide using 23333-1-AP (Eg5 antibody) at dilution of 1:400 (under 10x lens). Heat mediated antigen retrieval with Tris-EDTA buffer (pH 9.0).