

For Research Use Only

FCHSD1 Polyclonal antibody

Catalog Number: 23362-1-AP **1 Publications**



Basic Information

Catalog Number: 23362-1-AP	GenBank Accession Number: BC047016	Purification Method: Antigen affinity purification
Size: 150ul , Concentration: 550 µg/ml by Nanodrop and 400 µg/ml by Bradford method using BSA as the standard;	GeneID (NCBI): 89848	Recommended Dilutions: WB 1:500-1:2000 IHC 1:50-1:500 IF 1:50-1:500
Source: Rabbit	Full Name: FCH and double SH3 domains 1	
Isotype: IgG	Calculated MW: 690 aa, 77 kDa	
Immunogen Catalog Number: AG19963	Observed MW: 46-50 kDa	

Applications

Tested Applications: IF, IHC, WB, ELISA	Positive Controls: WB : HEK-293 cells, K-562 cells, HeLa cells, Jurkat cells IHC : human breast cancer tissue, IF : mouse kidney tissue,
Cited Applications: WB	
Species Specificity: human, mouse	
Cited Species: mouse	
Note-IHC: suggested antigen retrieval with TE buffer pH 9.0; (*) Alternatively, antigen retrieval may be performed with citrate buffer pH 6.0	

Background Information

FCHSD1 (FCH and double SH3 domains 1), also known as NWK2, is a member of the F-BAR family, which is involved in endocytosis and vesicle trafficking. FCHSD1 is expressed in mouse cochlear sensory hair cells and plays an important role in regulating the assembly or maintenance of F-actin in hair cell stereocilia and cuticular plate (PMID: 23437151). FCHSD1 also plays a role in stress response sensing and oxidative stress integration and is involved in the pathogenesis of emphysema (PMID: 34168078). FCHSD1 has three isoforms with molecular weights of 77 kDa, 46 kDa, and 40 kDa.

Notable Publications

Author	Pubmed ID	Journal	Application
Takahiro Kawasaki	34168078	Proc Natl Acad Sci U S A	WB

Storage

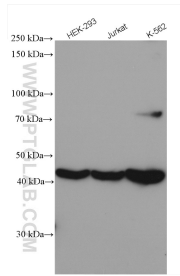
Storage:
Store at -20°C. Stable for one year after shipment.
Storage Buffer:
PBS with 0.02% sodium azide and 50% glycerol pH 7.3.
Aliquoting is unnecessary for -20°C storage

*** 20ul sizes contain 0.1% BSA

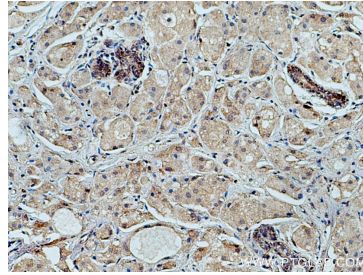
For technical support and original validation data for this product please contact:
T: 1 (888) 4PTGLAB (1-888-478-4522) (toll free in USA), or 1(312) 455-8498 (outside USA)
E: proteintech@ptglab.com
W: ptglab.com

This product is exclusively available under Proteintech Group brand and is not available to purchase from any other manufacturer.

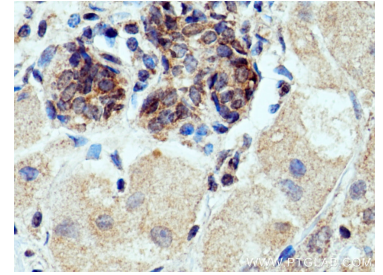
Selected Validation Data



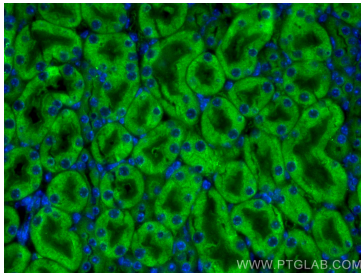
Various lysates were subjected to SDS PAGE followed by western blot with 23362-1-AP (FCHSD1 antibody) at dilution of 1:1000 incubated at room temperature for 1.5 hours.



Immunohistochemical analysis of paraffin-embedded human breast cancer tissue slide using 23362-1-AP (FCHSD1 antibody) at dilution of 1:200 (under 10x lens). Heat mediated antigen retrieval with Tris-EDTA buffer (pH 9.0).



Immunohistochemical analysis of paraffin-embedded human breast cancer tissue slide using 23362-1-AP (FCHSD1 antibody) at dilution of 1:200 (under 40x lens). Heat mediated antigen retrieval with Tris-EDTA buffer (pH 9.0).



Immunofluorescent analysis of (4% PFA) fixed mouse kidney tissue using FCHSD1 antibody (23362-1-AP) at dilution of 1:200 and CoraLite®488-Conjugated AffiniPure Goat Anti-Rabbit IgG(H+L).