

For Research Use Only

SGK1 Polyclonal antibody

Catalog Number: 23394-1-AP

Featured Product

7 Publications



Basic Information

Catalog Number:

23394-1-AP

Size:

150ul, Concentration: 1000 µg/ml by Nanodrop and 413 µg/ml by Bradford method using BSA as the standard;

Source:

Rabbit

Isotype:

IgG

Immunogen Catalog Number:

AG17888

GenBank Accession Number:

BC001263

GeneID (NCBI):

6446

UNIPROT ID:

O00141

Full Name:

serum/glucocorticoid regulated kinase 1

Calculated MW:

431 aa, 49 kDa

Purification Method:

Antigen affinity purification

Recommended Dilutions:

IP 0.5-4.0 ug for 1.0-3.0 mg of total protein lysate
IHC 1:20-1:200
IF/ICC 1:50-1:500

Applications

Tested Applications:

IHC, IF/ICC, IP, ELISA

Cited Applications:

IHC

Species Specificity:

human, mouse

Cited Species:

human, mouse

Note-IHC: suggested antigen retrieval with TE buffer pH 9.0; (*) Alternatively, antigen retrieval may be performed with citrate buffer pH 6.0

Positive Controls:

IP : HEK-293 cells,

IHC : human pancreas tissue, human breast cancer tissue

IF/ICC : HEK-293 cells,

Background Information

Serum- and glucocorticoid-induced kinase 1 (SGK1), also named as SGK, is a S/T protein kinase that belongs to the AGC (cAMP-dependent, cGMP-dependent, and protein kinase C) kinase family. It is expressed in many cell types and participates in numerous cellular processes and it is ubiquitinated and degraded at the ER membrane (PMID: 16847254). The N-terminal motif of SGK1 is critical for its ubiquitination and degradation (PMID: 16817852). SGK and Akt are likely to phosphorylate related substrates, as they share a similar consensus phosphorylation site (RXRXXS/T) (PMID: 11154281). It has 5 isoforms produced by alternative promoter usage and alternative splicing.

Notable Publications

Author	Pubmed ID	Journal	Application
Huaxin Zhou	25993992	FASEB J	
Junling Ren	34162726	J Immunol	
Yunzhi Liu	35671705	J Innate Immun	

Storage

Storage:

Store at -20°C. Stable for one year after shipment.

Storage Buffer:

PBS with 0.02% sodium azide and 50% glycerol pH 7.3.

Aliquoting is unnecessary for -20°C storage

*** 20ul sizes contain 0.1% BSA

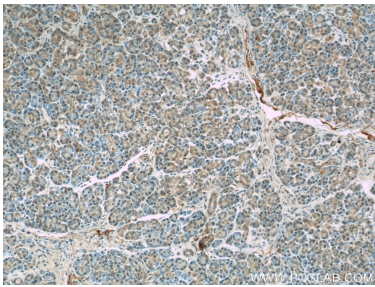
For technical support and original validation data for this product please contact:

T: 1 (888) 4PTGLAB (1-888-478-4522) (toll free in USA), or 1(312) 455-8498 (outside USA)

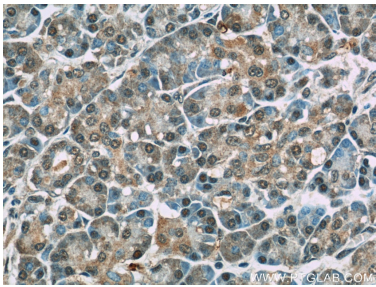
E: proteintech@ptglab.com
W: ptglab.com

This product is exclusively available under Proteintech Group brand and is not available to purchase from any other manufacturer.

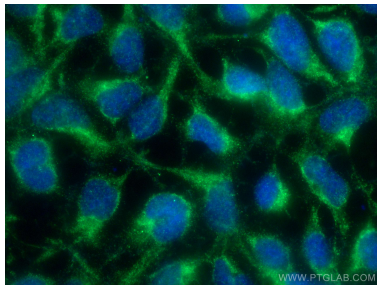
Selected Validation Data



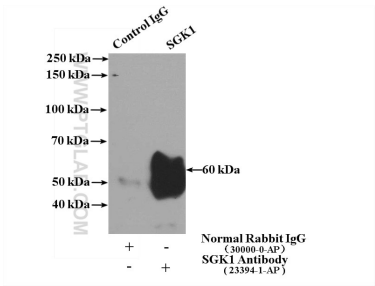
Immunohistochemical analysis of paraffin-embedded human pancreas slide using 23394-1-AP (SGK1 Antibody) at dilution of 1:50.



Immunohistochemical analysis of paraffin-embedded human pancreas slide using 23394-1-AP (SGK1 Antibody) at dilution of 1:50.



Immunofluorescent analysis of (-20°C Ethanol) fixed HEK-293 cells using SGK1 antibody (23394-1-AP) at dilution of 1:200 and CoraLite®488-Conjugated AffiniPure Goat Anti-Rabbit IgG(H+L).



IP result of anti-SGK1 (IP:23394-1-AP, 4ug; Detection:23394-1-AP 1:600) with HEK-293 cells lysate 1480ug.