

For Research Use Only

DOCK180 Polyclonal antibody

Catalog Number: 23421-1-AP

5 Publications



Basic Information

Catalog Number:

23421-1-AP

Size:

150ul, Concentration: 1000 ug/ml by Nanodrop and 440 ug/ml by Bradford method using BSA as the standard;

Source:

Rabbit

Isotype:

IgG

Immunogen Catalog Number:

AG18069

GenBank Accession Number:

BC146857

GeneID (NCBI):

1793

UNIPROT ID:

Q14185

Full Name:

dedicator of cytokinesis 1

Calculated MW:

1865 aa, 215 kDa

Observed MW:

215 kDa

Purification Method:

Antigen affinity purification

Recommended Dilutions:

WB 1:500-1:2000

IP 0.5-4.0 ug for 1.0-3.0 mg of total protein lysate

IHC 1:20-1:200

IF/ICC 1:10-1:100

Applications

Tested Applications:

WB, IHC, IF/ICC, IP, ELISA

Cited Applications:

WB

Species Specificity:

human

Cited Species:

human, mouse, zebrafish

Positive Controls:

WB: HEK-293 cells, LNCaP cells, MCF-7 cells, A431 cells, HeLa cells

IP: HeLa cells,

IHC: human colon tissue,

IF/ICC: HeLa cells,

Note-IHC: suggested antigen retrieval with *TE buffer pH 9.0*; (*) Alternatively, antigen retrieval may be performed with *citrate buffer pH 6.0*

Notable Publications

Author	Pubmed ID	Journal	Application
Xujuan Sun	29802377	Cell Death Dis	WB
Hua Qu	33627322	Diabetes	WB
Chuangkun Li	38750717	Exp Cell Res	WB

Storage

Storage:

Store at -20°C. Stable for one year after shipment.

Storage Buffer:

PBS with 0.02% sodium azide and 50% glycerol pH 7.3.

Aliquoting is unnecessary for -20°C storage

*** 20ul sizes contain 0.1%BSA

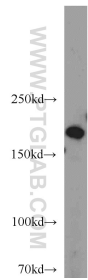
For technical support and original validation data for this product please contact:

T: 1 (888) 4PTGLAB (1-888-478-4522) (toll free in USA), or 1(312) 455-8498 (outside USA)

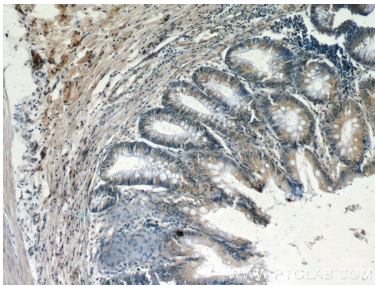
E: proteintech@ptglab.com
W: ptglab.com

This product is exclusively available under Proteintech Group brand and is not available to purchase from any other manufacturer.

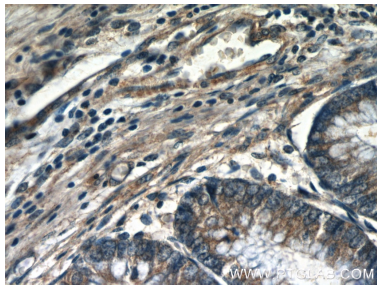
Selected Validation Data



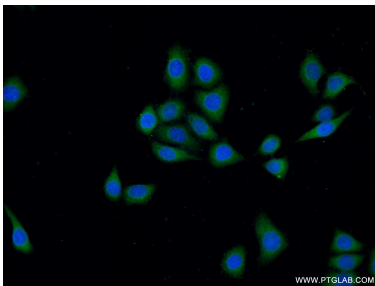
HEK-293 cells were subjected to SDS PAGE followed by western blot with 23421-1-AP (DOCK180 antibody) at dilution of 1:1000 incubated at room temperature for 1.5 hours.



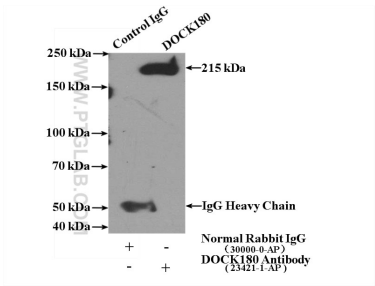
Immunohistochemical analysis of paraffin-embedded human colon slide using 23421-1-AP (DOCK180 antibody at dilution of 1:50.



Immunohistochemical analysis of paraffin-embedded human colon slide using 23421-1-AP (DOCK180 antibody at dilution of 1:50.



Immunofluorescent analysis of (-20°C Ethanol) fixed HeLa cells using 23421-1-AP (DOCK180 antibody) at dilution of 1:25 and Alexa Fluor 488-conjugated AffiniPure Goat Anti-Rabbit IgG(H+L).



IP result of anti-DOCK180 (IP:23421-1-AP, 4ug; Detection:23421-1-AP 1:1000) with HeLa cells lysate 3200ug.