

For Research Use Only

ESF1 Polyclonal antibody

Catalog Number: 23496-1-AP



Basic Information

Catalog Number: 23496-1-AP	GenBank Accession Number: BC146542	Purification Method: Antigen Affinity purified
Size: 150ul , Concentration: 700 µg/ml by Nanodrop and 333 µg/ml by Bradford method using BSA as the standard;	GeneID (NCBI): 51575	Recommended Dilutions: WB 1:1000-1:4000 IF 1:20-1:200
Source: Rabbit	Full Name: ESF1, nucleolar pre-rRNA processing protein, homolog (S. cerevisiae)	
Isotype: IgG	Calculated MW: 851 aa, 99 kDa	
Immunogen Catalog Number: AG19037	Observed MW: 100-110 kDa	

Applications

Tested Applications: IF, WB, ELISA	Positive Controls:
Species Specificity: human, mouse	WB : mouse heart tissue, IF : MCF-7 cells,

Background Information

Storage

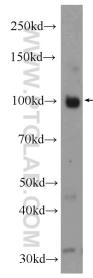
Storage:
Store at -20°C. Stable for one year after shipment.
Storage Buffer:
PBS with 0.02% sodium azide and 50% glycerol pH 7.3.
Aliquoting is unnecessary for -20°C storage

*** 20ul sizes contain 0.1% BSA

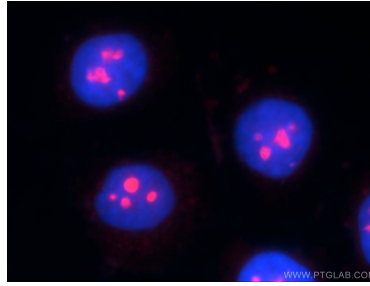
For technical support and original validation data for this product please contact:
T: 1 (888) 4PTGLAB (1-888-478-4522) (toll free in USA), or 1(312) 455-8498 (outside USA)
E: proteintech@ptglab.com
W: ptglab.com

This product is exclusively available under Proteintech Group brand and is not available to purchase from any other manufacturer.

Selected Validation Data



mouse heart tissue were subjected to SDS PAGE followed by western blot with 23496-1-AP (ESF1 Antibody) at dilution of 1:2000 incubated at room temperature for 1.5 hours.



Immunofluorescent analysis of MCF-7 cells using 23496-1-AP (ESF1 antibody) at dilution of 1:50 and Rhodamine-Goat anti-Rabbit IgG.