

For Research Use Only

Mammaglobin A Polyclonal antibody

Catalog Number: 23501-1-AP

1 Publications



Basic Information

Catalog Number: 23501-1-AP	GenBank Accession Number: BC067220	Purification Method: Antigen affinity purification
Size: 150ul , Concentration: 500 ug/ml by Nanodrop;	GeneID (NCBI): 4250	Recommended Dilutions: WB 1:200-1:1000 IHC 1:20-1:200
Source: Rabbit	UNIPROT ID: Q13296	
Isotype: IgG	Full Name: secretoglobin, family 2A, member 2	
Immunogen Catalog Number: AG20122	Calculated MW: 120 aa, 13 kDa	
	Observed MW: 6-10 kDa	

Applications

Tested Applications: WB, IHC, ELISA	Positive Controls:
Cited Applications: IHC	WB : MCF-7 cells,
Species Specificity: human	IHC : human breast cancer tissue,
Cited Species: human	
Note-IHC: suggested antigen retrieval with TE buffer pH 9.0; (*) Alternatively, antigen retrieval may be performed with citrate buffer pH 6.0	

Background Information

SCGB2A2, also known as mammaglobin A, is a member of the secretoglobin superfamily. It is a breast cancer-associated antigen almost exclusively over-expressed in primary and metastatic human breast cancers, making it a specific molecular marker and a potential therapeutic target for breast cancer. SCGB2A2 is a 93-amino acid protein with a calculated molecular weight of 10.5 kDa. This polyclonal antibody is raised against the C-terminal 71 amino acids of the protein encoded by a cDNA (MGC:71974; BC067220).

Notable Publications

Author	Pubmed ID	Journal	Application
Bo Liu	27278284	Mol Med Rep	IHC

Storage

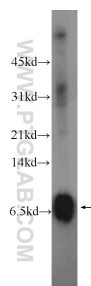
Storage:
Store at -20°C. Stable for one year after shipment.
Storage Buffer:
PBS with 0.02% sodium azide and 50% glycerol pH 7.3.
Aliquoting is unnecessary for -20°C storage

*** 20ul sizes contain 0.1% BSA

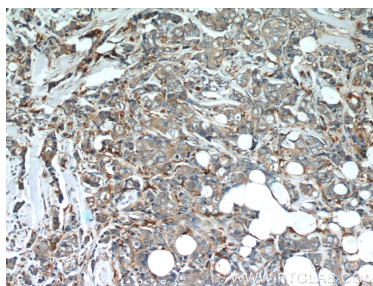
For technical support and original validation data for this product please contact:
T: 1 (888) 4PTGLAB (1-888-478-4522) (toll free in USA), or 1(312) 455-8498 (outside USA)
E: proteintech@ptglab.com
W: ptglab.com

This product is exclusively available under Proteintech Group brand and is not available to purchase from any other manufacturer.

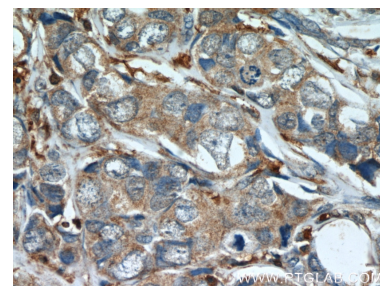
Selected Validation Data



MCF-7 cells were subjected to SDS PAGE followed by western blot with 23501-1-AP (Mammaglobin A antibody at dilution of 1:300 incubated at room temperature for 1.5 hours.



Immunohistochemical analysis of paraffin-embedded human breast cancer slide using 23501-1-AP (Mammaglobin A antibody at dilution of 1:50.



Immunohistochemical analysis of paraffin-embedded human breast cancer slide using 23501-1-AP (Mammaglobin A antibody at dilution of 1:50.