

For Research Use Only

LBP Polyclonal antibody

Catalog Number: 23559-1-AP

8 Publications



Basic Information

Catalog Number:

23559-1-AP

Size:

150ul, Concentration: 700 ug/ml by Nanodrop and 387 ug/ml by Bradford method using BSA as the standard;

Source:

Rabbit

Isotype:

IgG

Immunogen Catalog Number:

AG13485

GenBank Accession Number:

BC022256

GeneID (NCBI):

3929

UNIPROT ID:

P18428

Full Name:

lipopolysaccharide binding protein

Calculated MW:

481 aa, 53 kDa

Observed MW:

53-60 kDa

Purification Method:

Antigen affinity purification

Recommended Dilutions:

WB 1:500-1:2000

IP 0.5-4.0 ug for 1.0-3.0 mg of total protein lysate

Applications

Tested Applications:

WB, IP, ELISA

Cited Applications:

WB, IF, IHC

Species Specificity:

human, mouse, rat

Cited Species:

human, rat, mouse, bovine

Positive Controls:

WB : mouse liver tissue,

IP : mouse liver tissue,

Background Information

LBP (lipopolysaccharide-binding protein) is an acute-phase protein, predominantly synthesized by hepatocytes. It is present in normal serum at concentrations of 5 to 10 µg/ml, rising up to 200 µg/ml 24 h after induction of an acute-phase response. LBP binds to the lipid A moiety of bacterial lipopolysaccharides (LPS), a glycolipid present in the outer membrane of all Gram-negative bacteria, and acts as an affinity enhancer for CD14, facilitating its association with LPS. (PMID: 9665271; 11598069)

Notable Publications

Author	Pubmed ID	Journal	Application
Takahisa Watahiki	36290662	Antioxidants (Basel)	WB
Timothy A Reinhardt	32439417	J Proteomics	WB
Min Zhang	35069505	Front Microbiol	WB

Storage

Storage:

Store at -20°C. Stable for one year after shipment.

Storage Buffer:

PBS with 0.02% sodium azide and 50% glycerol pH 7.3.

Aliquoting is unnecessary for -20°C storage

*** 20ul sizes contain 0.1% BSA

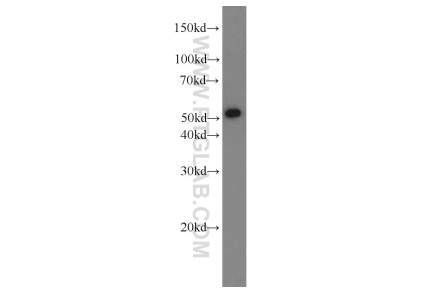
For technical support and original validation data for this product please contact:

T: 1 (888) 4PTGLAB (1-888-478-4522) (toll free in USA), or 1(312) 455-8498 (outside USA)

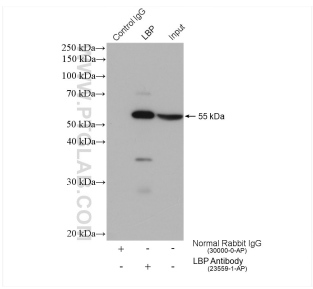
E: proteintech@ptglab.com
W: ptglab.com

This product is exclusively available under Proteintech Group brand and is not available to purchase from any other manufacturer.

Selected Validation Data



mouse liver tissue were subjected to SDS PAGE followed by western blot with 23559-1-AP (LBP antibody) at dilution of 1:1000 incubated at room temperature for 1.5 hours.



IP result of anti-LBP (IP:23559-1-AP, 4ug; Detection:23559-1-AP 1:500) with mouse liver tissue lysate 3040 ug.