

For Research Use Only

VSX1 Polyclonal antibody

Catalog Number: 23566-1-AP



Basic Information

Catalog Number: 23566-1-AP	GenBank Accession Number: BC126228	Purification Method: Antigen affinity purification
Size: 150ul , Concentration: 700 ug/ml by Nanodrop and 380 ug/ml by Bradford method using BSA as the standard;	GeneID (NCBI): 30813	Recommended Dilutions: WB 1:200-1:1000 IF-P 1:50-1:500
Source: Rabbit	UNIPROT ID: Q9NZR4	
Isotype: IgG	Full Name: visual system homeobox 1	
Immunogen Catalog Number: AG19222	Calculated MW: 365 aa, 38 kDa	
	Observed MW: 70 kDa	

Applications

Tested Applications: WB, IF-P, ELISA	Positive Controls:
Species Specificity: human, mouse	WB : mouse eye tissue, Raji cells IF-P : mouse eye tissue,

Background Information

VSX1 (visual system homeobox 1) is a member of the Vsx1 group of vertebrate paired-like homeodomain transcription factors locating to the nucleus. Mutations in the VSX1 gene in keratoconus have been reported in many studies. VSX1 is considered important in ocular development and is particularly involved in the developing cornea (PMID:21139977). And previous studies have identified that Vsx1 participates in regulating retinal progenitor proliferation, differentiation and functional maintenance of bipolar cells (PMID:25150888). It was demonstrated that Vsx1 express in embryonic craniofacial, adult corneal, and adult retinal cDNA libraries. VSX1 mRNA has been found in the outer tier of the inner nuclear layer of the human retina and the cornea (PMID: 21139977).

Storage

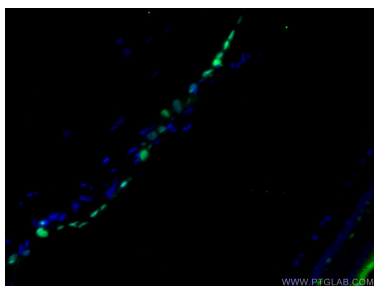
Storage:
Store at -20°C. Stable for one year after shipment.
Storage Buffer:
PBS with 0.02% sodium azide and 50% glycerol pH 7.3.
Aliquoting is unnecessary for -20°C storage

*** 20ul sizes contain 0.1% BSA

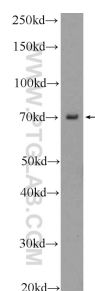
For technical support and original validation data for this product please contact:
T: 1 (888) 4PTGLAB (1-888-478-4522) (toll free in USA), or 1(312) 455-8498 (outside USA)
E: proteintech@ptglab.com
W: ptglab.com

This product is exclusively available under Proteintech Group brand and is not available to purchase from any other manufacturer.

Selected Validation Data



Immunofluorescent analysis of (4% PFA) fixed mouse eye tissue using 23566-1-AP (VSX1 antibody) at dilution of 1:100 and CoraLite488-Conjugated Goat Anti-Rabbit IgG(H+L).



mouse eye tissue were subjected to SDS PAGE followed by western blot with 23566-1-AP (VSX1 Antibody) at dilution of 1:300 incubated at room temperature for 1.5 hours.