

For Research Use Only

TMEM231 Polyclonal antibody

Catalog Number: 23731-1-AP



Basic Information

Catalog Number: 23731-1-AP	GenBank Accession Number: BC010609	Purification Method: Antigen affinity purification
Size: 150ul , Concentration: 200 µg/ml by Nanodrop and 133 µg/ml by Bradford method using BSA as the standard;	GeneID (NCBI): 79583	Recommended Dilutions: IHC 1:20-1:200 IF 1:200-1:800
Source: Rabbit	Full Name: hypothetical protein FLJ22167	
Isotype: IgG	Calculated MW: 345 aa, 39 kDa	
Immunogen Catalog Number: AG20669		

Applications

Tested Applications: IF, IHC, ELISA	Positive Controls: IHC : human pancreas tissue, IF : MDCK cells,
Species Specificity: human, canine	
Note-IHC: suggested antigen retrieval with TE buffer pH 9.0; (*) Alternatively, antigen retrieval may be performed with citrate buffer pH 6.0	

Background Information

Transmembrane protein 231 (TMEM231) encodes a 36 kDa two-pass transmembrane protein that is part of the B9 complex and localizes to the base of the ciliary axoneme at the TZ. TMEM231 was first identified as a causative gene for MKS and participates in the formation of the diffusion barrier between the cilia and plasma membrane (PMID: 34912761, 37736303). Tmem231 mutant mice have developmental defects reminiscent of MKS patients, including corticomedullary kidney cysts, polydactyly and hepatic ductal plate malformation (PMID: 25869670).

Storage

Storage:
Store at -20°C. Stable for one year after shipment.
Storage Buffer:
PBS with 0.02% sodium azide and 50% glycerol pH 7.3.
Aliquoting is unnecessary for -20°C storage

*** 20ul sizes contain 0.1% BSA

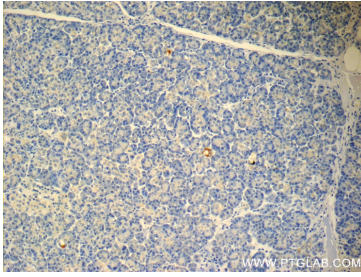
For technical support and original validation data for this product please contact:

T: 1 (888) 4PTGLAB (1-888-478-4522) (toll free in USA), or 1(312) 455-8498 (outside USA)

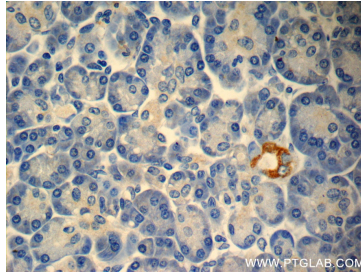
E: proteintech@ptglab.com
W: ptglab.com

This product is exclusively available under Proteintech Group brand and is not available to purchase from any other manufacturer.

Selected Validation Data



Immunohistochemical analysis of paraffin-embedded human pancreas slide using 23731-1-AP (TMEM231 Antibody) at dilution of 1:50. (under 10x lens).



Immunohistochemical analysis of paraffin-embedded human pancreas slide using 23731-1-AP (TMEM231 Antibody) at dilution of 1:50. (under 40x lens).



Immunofluorescent analysis of (4% PFA) fixed MDCK cells using TMEM231 antibody (23731-1-AP) at dilution of 1:400 and CoraLite®488-Conjugated AffiniPure Goat Anti-Rabbit IgG(H+L).