

For Research Use Only

ENOX1 Polyclonal antibody

Catalog Number: 23750-1-AP



Basic Information

| | | |
|--|---|--|
| Catalog Number: 23750-1-AP | GenBank Accession Number: BC024178 | Purification Method: Antigen Affinity purified |
| Size: 150ul , Concentration: 900 µg/ml by Nanodrop and 433 µg/ml by Bradford method using BSA as the standard; | GeneID (NCBI): 55068 | Recommended Dilutions: WB 1:500-1:2000 IHC 1:20-1:200 |
| Source: Rabbit | Full Name: ecto-NOX disulfide-thiol exchanger 1 | |
| Isotype: IgG | Calculated MW: 73 kDa | |
| Immunogen Catalog Number: AG20715 | Observed MW: 73 kDa | |

Applications

| | |
|--|---|
| Tested Applications: IHC, WB, ELISA | Positive Controls: WB : Jurkat cells, MCF-7 cells, Raji cells |
| Species Specificity: human | IHC : human tonsillitis tissue, |
| Note-IHC: suggested antigen retrieval with TE buffer pH 9.0; (*) Alternatively, antigen retrieval may be performed with citrate buffer pH 6.0 | |

Background Information

Storage

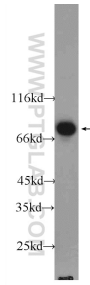
Storage:
Store at -20°C. Stable for one year after shipment.
Storage Buffer:
PBS with 0.02% sodium azide and 50% glycerol pH 7.3.
Aliquoting is unnecessary for -20°C storage

*** 20ul sizes contain 0.1% BSA

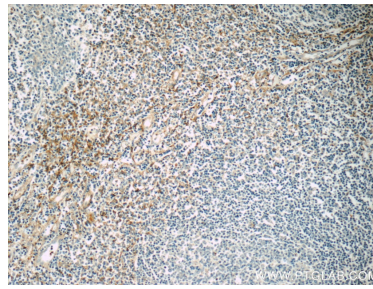
For technical support and original validation data for this product please contact:
T: 1 (888) 4PTGLAB (1-888-478-4522) (toll free in USA), or 1(312) 455-8498 (outside USA)
E: proteintech@ptglab.com
W: ptglab.com

This product is exclusively available under Proteintech Group brand and is not available to purchase from any other manufacturer.

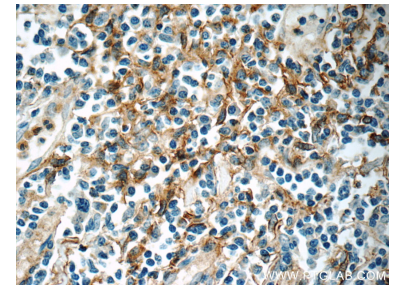
Selected Validation Data



Jurkat cells were subjected to SDS PAGE followed by western blot with 23750-1-AP (ENOX1 antibody) at dilution of 1:1000 incubated at room temperature for 1.5 hours.



Immunohistochemical analysis of paraffin-embedded human tonsillitis slide using 23750-1-AP (ENOX1 Antibody) at dilution of 1:50.



Immunohistochemical analysis of paraffin-embedded human tonsillitis slide using 23750-1-AP (ENOX1 Antibody) at dilution of 1:50.