

For Research Use Only

RSK2 Polyclonal antibody

Catalog Number: 23762-1-AP

Featured Product

8 Publications



Basic Information

Catalog Number:

23762-1-AP

Size:

150ul, Concentration: 700 ug/ml by Nanodrop and 360 ug/ml by Bradford method using BSA as the standard;

Source:

Rabbit

Isotype:

IgG

Immunogen Catalog Number:

AG20620

GenBank Accession Number:

BC096301

GeneID (NCBI):

6197

UNIPROT ID:

P51812

Full Name:

ribosomal protein S6 kinase, 90kDa, polypeptide 3

Calculated MW:

740 aa, 84 kDa

Observed MW:

84 kDa

Purification Method:

Antigen affinity purification

Recommended Dilutions:

WB 1:2000-1:5000

IP 0.5-4.0 ug for 1.0-3.0 mg of total protein lysate

IHC 1:50-1:500

IF-P 1:50-1:500

IF/ICC 1:50-1:500

Applications

Tested Applications:

WB, IHC, IF/ICC, IF-P, IP, ELISA

Cited Applications:

WB

Species Specificity:

human, mouse

Cited Species:

human

Note-IHC: suggested antigen retrieval with TE buffer pH 9.0; (*) Alternatively, antigen retrieval may be performed with citrate buffer pH 6.0

Positive Controls:

WB: NIH/3T3 cells, K-562 cells, MCF-7 cells, HepG2 cells

IP: K-562 cells,

IHC: human kidney tissue, mouse colon tissue, mouse kidney tissue

IF-P: mouse brain tissue,

IF/ICC: HepG2 cells, HUVEC cells

Background Information

RPS6KA3 (Ribosomal protein S6 kinase alpha-3) is also named as ISPK1, MAPKAPK1B, RSK2 and belongs to the protein kinase superfamily. It localizes at the kinetochores under spindle checkpoint conditions, and during mitosis, associated with the centrosomes, the spindle and at the mid-body (PMID:20383198). It is required for EGF activated phosphorylation of histone H3, which may cause chromatin remodeling and facilitate gene transcription and maybe playing an essential regulatory role in protein synthesis during cell proliferation.

Notable Publications

Author	Pubmed ID	Journal	Application
Ying Zhang	29074436	Int J Biochem Cell Biol	WB
Daisuke Watanabe	31756944	Cancers (Basel)	WB
Zhengzheng Su	29341215	Prostate	WB

Storage

Storage:

Store at -20°C. Stable for one year after shipment.

Storage Buffer:

PBS with 0.02% sodium azide and 50% glycerol pH 7.3.

Aliquoting is unnecessary for -20°C storage

*** 20ul sizes contain 0.1% BSA

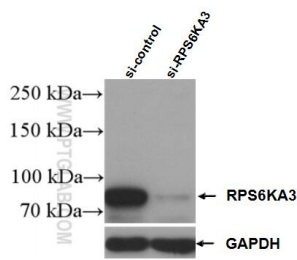
For technical support and original validation data for this product please contact:

T: 1 (888) 4PTGLAB (1-888-478-4522) (toll free in USA), or 1(312) 455-8498 (outside USA)

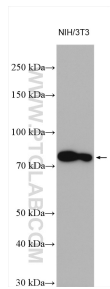
E: proteintech@ptglab.com
W: ptglab.com

This product is exclusively available under Proteintech Group brand and is not available to purchase from any other manufacturer.

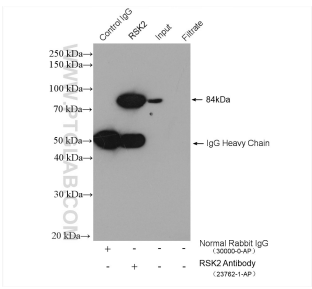
Selected Validation Data



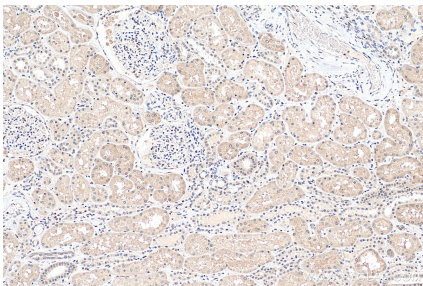
WB result of RSK2 antibody (23762-1-AP; 1:2000; incubated at room temperature for 1.5 hours) with sh-Control and sh-RSK2 transfected K-562 cells.



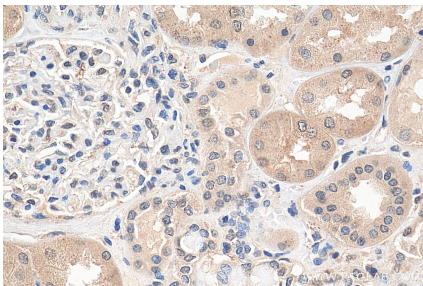
NIH/3T3 cells were subjected to SDS PAGE followed by western blot with 23762-1-AP (RSK2 antibody) at dilution of 1:4000 incubated at room temperature for 1.5 hours.



IP result of anti-RSK2 (IP:23762-1-AP, 4ug; Detection:23762-1-AP 1:4000) with K-562 cells lysate 3680 ug.



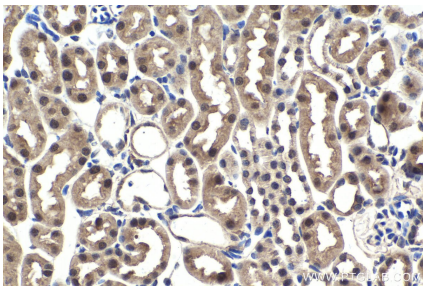
Immunohistochemical analysis of paraffin-embedded human kidney tissue slide using 23762-1-AP (RSK2 antibody) at dilution of 1:200 (under 10x lens). Heat mediated antigen retrieval with Tris-EDTA buffer (pH 9.0).



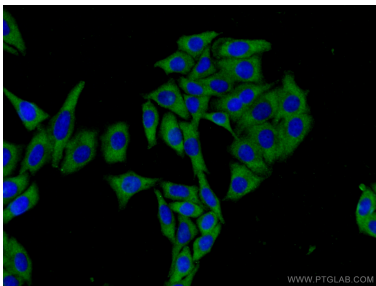
Immunohistochemical analysis of paraffin-embedded human kidney tissue slide using 23762-1-AP (RSK2 antibody) at dilution of 1:200 (under 40x lens). Heat mediated antigen retrieval with Tris-EDTA buffer (pH 9.0).



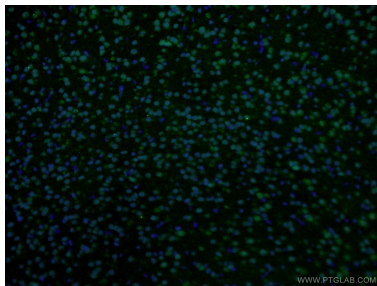
Immunohistochemical analysis of paraffin-embedded mouse colon tissue slide using 23762-1-AP (RSK2 antibody) at dilution of 1:1000 (under 10x lens). Heat mediated antigen retrieval with Tris-EDTA buffer (pH 9.0).



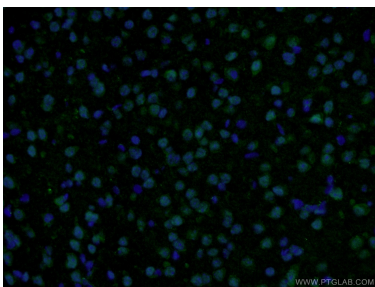
Immunohistochemical analysis of paraffin-embedded mouse kidney tissue slide using 23762-1-AP (RSK2 antibody) at dilution of 1:1000 (under 40x lens). Heat mediated antigen retrieval with Tris-EDTA buffer (pH 9.0).



Immunofluorescent analysis of (-20°C Ethanol) fixed HepG2 cells using 23762-1-AP (RSK2 antibody) at dilution of 1:100 and CoraLite488-Conjugated AffiniPure Goat Anti-Rabbit IgG(H+L).



Immunofluorescent analysis of (4% PFA) fixed mouse brain tissue using 23762-1-AP (RSK2 antibody) at dilution of 1:50 and Alexa Fluor 488-conjugated AffiniPure Goat Anti-Rabbit IgG(H+L).



Immunofluorescent analysis of (4% PFA) fixed mouse brain tissue using 23762-1-AP (RSK2 antibody) at dilution of 1:50 and Alexa Fluor 488-conjugated AffiniPure Goat Anti-Rabbit IgG(H+L).