

For Research Use Only

RSRC1 Polyclonal antibody

Catalog Number: 23826-1-AP

Featured Product

1 Publications



Basic Information

Catalog Number: 23826-1-AP	GenBank Accession Number: BC006982	Purification Method: Antigen Affinity purified
Size: 150ul, Concentration: 1000 µg/ml by Nanodrop and 667 µg/ml by Bradford method using BSA as the standard;	GeneID (NCBI): 51319	Recommended Dilutions: WB 1:500-1:3000 IHC 1:20-1:200 IF 1:20-1:200
Source: Rabbit	Full Name: arginine/serine-rich coiled-coil 1	
Isotype: IgG	Calculated MW: 334 aa, 39 kDa	
Immunogen Catalog Number: AG20604	Observed MW: 38 kDa, 50 kDa	

Applications

Tested Applications: IF, IHC, WB, ELISA	Positive Controls: WB : HeLa cells, HepG2 cells
Cited Applications: IHC, WB	IHC : human small intestine tissue, human liver cancer tissue
Species Specificity: human	IF : HepG2 cells,
Cited Species: human	
Note-IHC: suggested antigen retrieval with TE buffer pH 9.0; (*) Alternatively, antigen retrieval may be performed with citrate buffer pH 6.0	

Background Information

RSRC1, also named as SRRP53, is a novel SR-related protein of an apparent molecular mass of 53 kDa (45-53 kDa). It is isolated in a gene trap screen that identifies proteins which localize to the nuclear speckles. RSRC1 plays a role in pre-mRNA splicing and constitutive.

Notable Publications

Author	Pubmed ID	Journal	Application
Shijun Yu	31257492	Mol Med Rep	WB, IHC

Storage

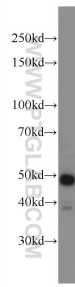
Storage:
Store at -20°C. Stable for one year after shipment.
Storage Buffer:
PBS with 0.02% sodium azide and 50% glycerol pH 7.3.
Aliquoting is unnecessary for -20°C storage

*** 20ul sizes contain 0.1% BSA

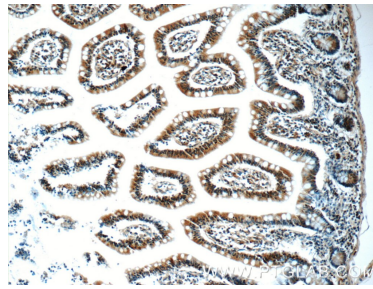
For technical support and original validation data for this product please contact:
T: 1 (888) 4PTGLAB (1-888-478-4522) (toll free in USA), or 1(312) 455-8498 (outside USA)
E: proteintech@ptglab.com
W: ptglab.com

This product is exclusively available under Proteintech Group brand and is not available to purchase from any other manufacturer.

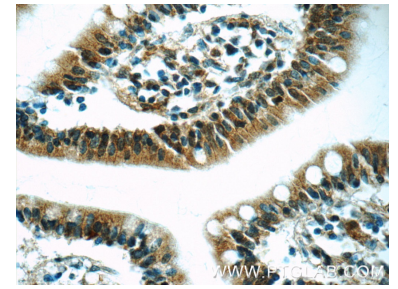
Selected Validation Data



HeLa cells were subjected to SDS PAGE followed by western blot with 23826-1-AP (RSRC1 Antibody) at dilution of 1:1500 incubated at room temperature for 1.5 hours.



Immunohistochemical analysis of paraffin-embedded human small intestine tissue slide using 23826-1-AP (RSRC1 Antibody) at dilution of 1:50 (under 10x lens).



Immunohistochemical analysis of paraffin-embedded human small intestine tissue slide using 23826-1-AP (RSRC1 Antibody) at dilution of 1:50 (under 40x lens).