

For Research Use Only

BCHE Polyclonal antibody

Catalog Number: 23854-1-AP **3 Publications**



Basic Information

Catalog Number: 23854-1-AP	GenBank Accession Number: BC008396	Purification Method: Antigen Affinity purified
Size: 150ul , Concentration: 1000 ug/ml by Nanodrop and 413 ug/ml by Bradford method using BSA as the standard;	GeneID (NCBI): 590	Recommended Dilutions: WB 1:500-1:1000 IHC 1:20-1:200 IF/ICC 1:50-1:500
Source: Rabbit	UNIPROT ID: P06276	
Isotype: IgG	Full Name: butyrylcholinesterase	
Immunogen Catalog Number: AG20888	Calculated MW: 602 aa, 68 kDa	
	Observed MW: 85-90 kDa	

Applications

Tested Applications: WB, IHC, IF/ICC, ELISA	Positive Controls: WB : HeLa cells, HEK-293 cells IHC : human liver tissue, IF/ICC : HeLa cells,
Cited Applications: WB, IF, IHC	
Species Specificity: human	
Cited Species: human, goat	
Note-IHC: suggested antigen retrieval with TE buffer pH 9.0; (*) Alternatively, antigen retrieval may be performed with citrate buffer pH 6.0	

Background Information

BCHE(butyrylcholinesterase) is an enzyme expressed in most human tissues. It may have a greater role in cholinergic transmission than previously surmised, making BChE inhibition an important therapeutic goal in Alzheimer's disease(PMID:11848688). BCHE is also named as CHE1 and belongs to the type-B carboxylesterase/lipase family. This is a glycoprotein with the molecular weight from 68 kDa to 90 kDa.

Notable Publications

Author	Pubmed ID	Journal	Application
Yuanyuan Li	30899600	Nat Biomed Eng	WB
Shibo Wang	38357546	Front Immunol	WB,IHC
Jia-Hao Wang	37508483	Cells	WB,IF

Storage

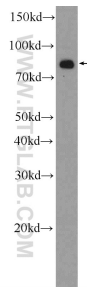
Storage:
Store at -20°C. Stable for one year after shipment.
Storage Buffer:
PBS with 0.02% sodium azide and 50% glycerol pH 7.3.
Aliquoting is unnecessary for -20°C storage

*** 20ul sizes contain 0.1% BSA

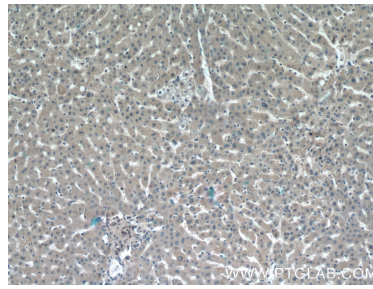
For technical support and original validation data for this product please contact:
T: 1 (888) 4PTGLAB (1-888-478-4522) (toll free in USA), or 1(312) 455-8498 (outside USA)
E: proteintech@ptglab.com
W: ptglab.com

This product is exclusively available under Proteintech Group brand and is not available to purchase from any other manufacturer.

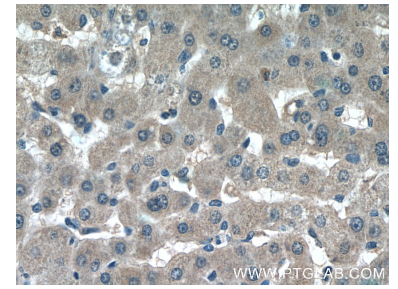
Selected Validation Data



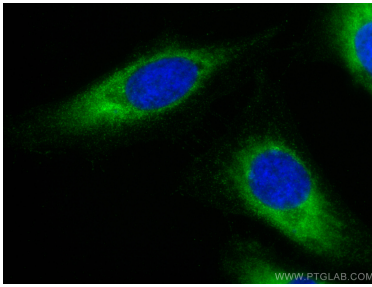
HeLa cells were subjected to SDS PAGE followed by western blot with 23854-1-AP (BCHE Antibody) at dilution of 1:600 incubated at room temperature for 1.5 hours.



Immunohistochemical analysis of paraffin-embedded human liver tissue slide using 23854-1-AP (BCHE Antibody) at dilution of 1:50 (under 10x lens).



Immunohistochemical analysis of paraffin-embedded human liver tissue slide using 23854-1-AP (BCHE Antibody) at dilution of 1:50 (under 40x lens).



Immunofluorescent analysis of (-20°C Methanol) fixed HeLa cells using BCHE antibody (23854-1-AP) at dilution of 1:200 and CoraLite®488-Conjugated AffiniPure Goat Anti-Rabbit IgG(H+L).