

For Research Use Only

# MRPL33 Polyclonal antibody

Catalog Number: 23870-1-AP



## Basic Information

Catalog Number:

23870-1-AP

Size:

150ul, Concentration: 600 ug/ml by Nanodrop and 367 ug/ml by Bradford method using BSA as the standard;

Source:

Rabbit

Isotype:

IgG

Immunogen Catalog Number:

AG20921

GenBank Accession Number:

BC009475

GeneID (NCBI):

9553

UNIPROT ID:

O75394

Full Name:

mitochondrial ribosomal protein L33

Calculated MW:

65 aa, 8 kDa

Purification Method:

Antigen Affinity purified

Recommended Dilutions:

IHC 1:50-1:500

IF/ICC 1:10-1:100

## Applications

Tested Applications:

IHC, IF/ICC, ELISA

Species Specificity:

human

**Note-IHC: suggested antigen retrieval with TE buffer pH 9.0; (\*) Alternatively, antigen retrieval may be performed with citrate buffer pH 6.0**

Positive Controls:

IHC : human kidney tissue,

IF/ICC : HepG2 cells,

## Background Information

MRPL33 is a mitochondrial ribosomal protein. Mammalian mitochondrial ribosomal proteins are encoded by nuclear genes and help in protein synthesis within the mitochondrion.

## Storage

Storage:

Store at -20°C. Stable for one year after shipment.

Storage Buffer:

PBS with 0.02% sodium azide and 50% glycerol pH 7.3.

Aliquoting is unnecessary for -20°C storage

\*\*\* 20ul sizes contain 0.1% BSA

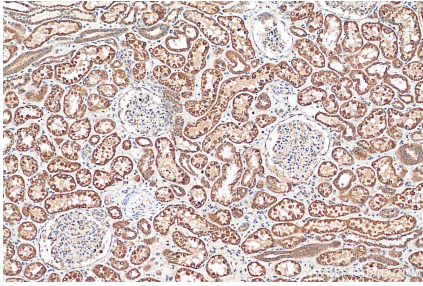
For technical support and original validation data for this product please contact:

T: 1 (888) 4PTGLAB (1-888-478-4522) (toll free in USA), or 1(312) 455-8498 (outside USA)

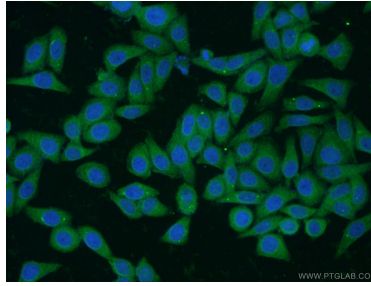
E: [proteintech@ptglab.com](mailto:proteintech@ptglab.com)  
W: [ptglab.com](http://ptglab.com)

This product is exclusively available under Proteintech Group brand and is not available to purchase from any other manufacturer.

## Selected Validation Data



Immunohistochemical analysis of paraffin-embedded human kidney tissue slide using 23870-1-AP (MRPL33 antibody) at dilution of 1:200 (under 10x lens). Heat mediated antigen retrieval with Tris-EDTA buffer (pH 9.0).



Immunofluorescent analysis of HepG2 cells using 23870-1-AP (MRPL33 antibody) at dilution of 1:25 and Alexa Fluor 488-conjugated Goat Anti-Rabbit IgG(H+L).