

For Research Use Only

# ODF2L Polyclonal antibody

Catalog Number: 23887-1-AP

Featured Product

2 Publications



## Basic Information

### Catalog Number:

23887-1-AP

### Size:

150ul, Concentration: 400 ug/ml by Nanodrop and 247 ug/ml by Bradford method using BSA as the standard;

### Source:

Rabbit

### Isotype:

IgG

### Immunogen Catalog Number:

AG20897

### GenBank Accession Number:

BC009779

### GeneID (NCBI):

57489

### UNIPROT ID:

Q9ULJ1

### Full Name:

outer dense fiber of sperm tails 2-like

### Calculated MW:

513 aa, 60 kDa

### Observed MW:

60-74 kDa

### Purification Method:

Antigen Affinity purified

### Recommended Dilutions:

WB 1:500-1:3000

## Applications

### Tested Applications:

WB, ELISA

### Cited Applications:

WB, IF

### Species Specificity:

human, mouse, rat

### Cited Species:

human

### Positive Controls:

WB : HEK-293 cells, mouse kidney tissue, rat kidney tissue

## Background Information

ODF2L, also named as KIAA1229, has many isoforms with MW 60-80 kDa. The function of ODF2L (Outer dense fiber protein 2-like) remains largely unknown.

## Notable Publications

Author	Pubmed ID	Journal	Application
Jie Li	36378528	J Clin Invest	WB
Paul de Saram	28775150	J Cell Sci	WB, IF

## Storage

### Storage:

Store at -20°C. Stable for one year after shipment.

### Storage Buffer:

PBS with 0.02% sodium azide and 50% glycerol pH 7.3.

Aliquoting is unnecessary for -20°C storage

\*\*\* 20ul sizes contain 0.1% BSA

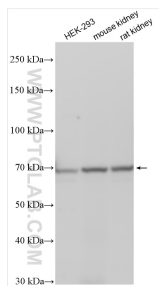
For technical support and original validation data for this product please contact:

T: 1 (888) 4PTGLAB (1-888-478-4522) (toll free in USA), or 1(312) 455-8498 (outside USA)

E: [proteintech@ptglab.com](mailto:proteintech@ptglab.com)  
W: [ptglab.com](http://ptglab.com)

This product is exclusively available under Proteintech Group brand and is not available to purchase from any other manufacturer.

## Selected Validation Data



Various lysates were subjected to SDS PAGE followed by western blot with 23887-1-AP (ODF2L antibody) at dilution of 1:1500 incubated at room temperature for 1.5 hours.