

For Research Use Only

ATAD2 Polyclonal antibody

Catalog Number: 23894-1-AP

Featured Product

5 Publications



Basic Information

Catalog Number:

23894-1-AP

Size:

150ul, Concentration: 500 ug/ml by Nanodrop and 300 ug/ml by Bradford method using BSA as the standard;

Source:

Rabbit

Isotype:

IgG

Immunogen Catalog Number:

AG20947

GenBank Accession Number:

BC113656

GeneID (NCBI):

29028

UNIPROT ID:

Q6PL18

Full Name:

ATPase family, AAA domain containing 2

Calculated MW:

1390 aa, 159 kDa

Observed MW:

159 kDa

Purification Method:

Antigen affinity purification

Recommended Dilutions:

WB 1:500-1:1000

IP 0.5-4.0 ug for 1.0-3.0 mg of total protein lysate

IF/ICC 1:50-1:500

Applications

Tested Applications:

WB, IF/ICC, IP, ELISA

Cited Applications:

WB, IP, IF

Species Specificity:

human

Cited Species:

human

Positive Controls:

WB : HeLa cells,

IP : HeLa cells,

IF/ICC : HeLa cells,

Background Information

ATAD2 is one of them encoding a conserved factor harbouring an AAA type ATPase domain and a bromodomain. ATAD2 controls chromatin dynamics, genome transcriptional activities and apoptotic cell response. This protein has 2 isoforms produced by alternative splicing.

Notable Publications

Author	Pubmed ID	Journal	Application
Shalabh Shukla	36404917	iScience	WB
Vanessa Alvarez	36680776	Cell Rep	
Yalin Tong	35085891	Biochem Biophys Res Commun	WB,IP

Storage

Storage:

Store at -20°C. Stable for one year after shipment.

Storage Buffer:

PBS with 0.02% sodium azide and 50% glycerol pH 7.3.

Aliquoting is unnecessary for -20°C storage

*** 20ul sizes contain 0.1% BSA

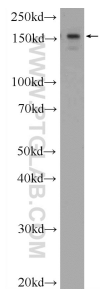
For technical support and original validation data for this product please contact:

T: 1 (888) 4PTGLAB (1-888-478-4522) (toll free in USA), or 1(312) 455-8498 (outside USA)

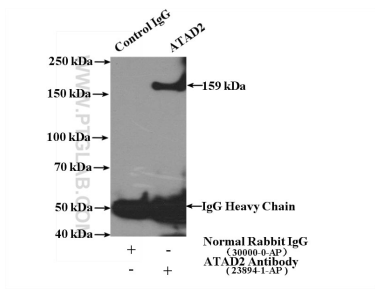
E: proteintech@ptglab.com
W: ptglab.com

This product is exclusively available under Proteintech Group brand and is not available to purchase from any other manufacturer.

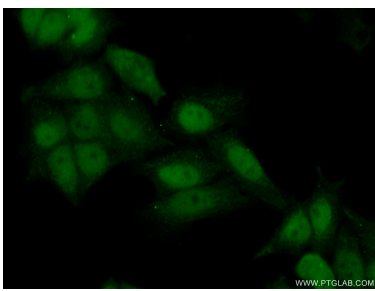
Selected Validation Data



HeLa cells were subjected to SDS PAGE followed by western blot with 23894-1-AP (ATAD2 Antibody) at dilution of 1:600 incubated at room temperature for 1.5 hours.



IP result of anti-ATAD2 (IP:23894-1-AP, 4ug; Detection:23894-1-AP 1:500) with HeLa cells lysate 3200ug.



Immunofluorescent analysis of (10% Formaldehyde) fixed HeLa cells using 23894-1-AP (ATAD2 antibody) at dilution of 1:50 and Alexa Fluor 488-conjugated Goat Anti-Rabbit IgG(H+L).