

For Research Use Only

AFAP1L1 Polyclonal antibody

Catalog Number: 23909-1-AP



Basic Information

Catalog Number:

23909-1-AP

Size:

150ul , Concentration: 800 ug/ml by Nanodrop and 340 ug/ml by Bradford method using BSA as the standard;

Source:

Rabbit

Isotype:

IgG

Immunogen Catalog Number:

AG21006

GenBank Accession Number:

BC125093

GeneID (NCBI):

134265

UNIPROT ID:

Q8TED9

Full Name:

actin filament associated protein 1-like 1

Calculated MW:

768 aa, 86 kDa

Observed MW:

75-86 kDa

Purification Method:

Antigen Affinity purified

Recommended Dilutions:

WB 1:500-1:1000

Applications

Tested Applications:

WB, ELISA

Species Specificity:

human, monkey

Positive Controls:

WB : COS-7 cells,

Background Information

Actin Filament-Associated Protein of 110 kDa (AFAP-110/AFAP1) is an adaptor protein with multiple protein binding motifs that is known to function as both an actin binding protein and a cSrc activating protein. A homology search of AFAP1 recently identified AFAP1L1 which has a similar sequence, domain structure and cellular localization. AFAP1L1 is highly expressed in human breast, colon and brain tissue. AFAP1L1 interacts with cortactin and involves the invadosomes formation. AFAP1L1 as a prognostic marker has a role in the progression of spindle cell sarcomas.

Storage

Storage:

Store at -20°C. Stable for one year after shipment.

Storage Buffer:

PBS with 0.02% sodium azide and 50% glycerol pH 7.3.

Aliquoting is unnecessary for -20°C storage

*** 20ul sizes contain 0.1% BSA

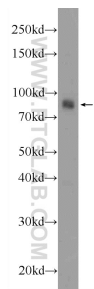
For technical support and original validation data for this product please contact:

T: 1 (888) 4PTGLAB (1-888-478-4522) (toll free in USA), or 1(312) 455-8498 (outside USA)

E: proteintech@ptglab.com
W: ptglab.com

This product is exclusively available under Proteintech Group brand and is not available to purchase from any other manufacturer.

Selected Validation Data



COS-7 cells were subjected to SDS PAGE followed by western blot with 23909-1-AP (AFAP1L1 Antibody) at dilution of 1:600 incubated at room temperature for 1.5 hours.