

For Research Use Only

BCL3 Polyclonal antibody

Catalog Number: 23959-1-AP

Featured Product

11 Publications



Basic Information

Catalog Number:

23959-1-AP

Size:

150ul, Concentration: 500 ug/ml by Nanodrop and 320 ug/ml by Bradford method using BSA as the standard;

Source:

Rabbit

Isotype:

IgG

Immunogen Catalog Number:

AG21040

GenBank Accession Number:

BC064993

GeneID (NCBI):

602

UNIPROT ID:

P20749

Full Name:

B-cell CLL/lymphoma 3

Calculated MW:

446 aa, 47 kDa

Observed MW:

48-60 kDa

Purification Method:

Antigen affinity purification

Recommended Dilutions:

WB 1:500-1:1000

IP 0.5-4.0 ug for 1.0-3.0 mg of total protein lysate

IHC 1:50-1:500

IF/ICC 1:50-1:500

Applications

Tested Applications:

WB, IHC, IF/ICC, IP, ELISA

Cited Applications:

WB, IP, IHC, CoIP, ChIP

Species Specificity:

human, mouse

Cited Species:

human, mouse

Note-IHC: suggested antigen retrieval with TE buffer pH 9.0; (*) Alternatively, antigen retrieval may be performed with citrate buffer pH 6.0

Positive Controls:

WB : HEK-293 cells, A549 cells, HeLa cells

IP : HEK-293 cells,

IHC : human lymphoma tissue, mouse spleen tissue

IF/ICC : HepG2 cells,

Background Information

BCL3 (BCL3 Transcription Coactivator), as a Protein Coding gene, has seven ankyrin repeat domains, a proline-rich N terminal domain and a serine- and proline-rich C-terminal domain(PMID: 31930327). BCL3 is an important contributor to chronic inflammatory disease states, such as osteoarthritis and rheumatoid arthritis. In the cytoplasm, BCL3 inhibits the nuclear translocation of the NF-kappa-B p50 subunit. In the nucleus, BCL3 acts as transcriptional activator that promotes transcription of NF-kappa-B target genes(Uniprot).

Notable Publications

Author	Pubmed ID	Journal	Application
Xiaojun Ma	34500467	Nucleic Acids Res	IHC
Daniel J Turnham	31957805	Carcinogenesis	WB
Joshua E Burda	35614216	Nature	IHC

Storage

Storage:

Store at -20°C. Stable for one year after shipment.

Storage Buffer:

PBS with 0.02% sodium azide and 50% glycerol pH 7.3.

Aliquoting is unnecessary for -20°C storage

*** 20ul sizes contain 0.1% BSA

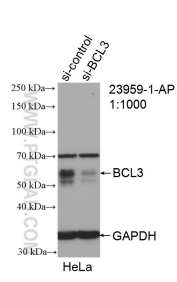
For technical support and original validation data for this product please contact:

T: 1 (888) 4PTGLAB (1-888-478-4522) (toll free in USA), or 1(312) 455-8498 (outside USA)

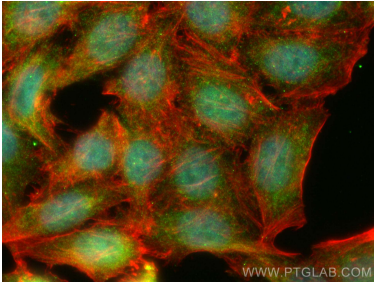
E: proteintech@ptglab.com
W: ptglab.com

This product is exclusively available under Proteintech Group brand and is not available to purchase from any other manufacturer.

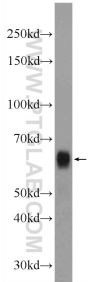
Selected Validation Data



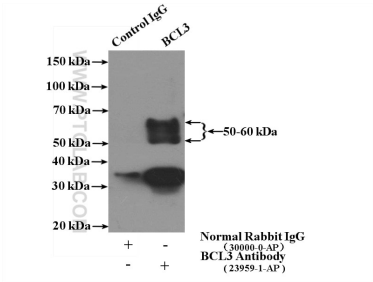
WB result of BCL3 antibody (23959-1-AP; 1:1000; incubated at room temperature for 1.5 hours) with sh-Control and sh-BCL3 transfected HeLa cells.



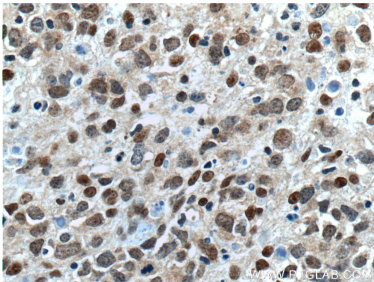
Immunofluorescent analysis of (4% PFA) fixed HepG2 cells using BCL3 antibody (23959-1-AP) at dilution of 1:200 and CoraLite®488-Conjugated Goat Anti-Rabbit IgG(H+L), CL594-phalloidin (red).



HEK-293 cells were subjected to SDS PAGE followed by western blot with 23959-1-AP (BCL3 Antibody) at dilution of 1:600 incubated at room temperature for 1.5 hours.



IP result of anti-BCL3 (IP:23959-1-AP, 4ug; Detection:23959-1-AP 1:600) with HEK-293 cells lysate 3000ug.



Immunohistochemical analysis of paraffin-embedded human lymphoma tissue slide using 23959-1-AP (BCL3 Antibody) at dilution of 1:200 (under 40x lens). Heat mediated antigen retrieval with Tris-EDTA buffer (pH 9.0).